

SFR 03/2005**Revised: 27 January 2005
(original version 17 June
2004)****Coverage: England****Theme: Education and
Training****Issued by**Department for Education
and Skills
Sanctuary Buildings
Great Smith Street
London SW1P 3BT**Telephone:****Press Office**

020 7925 6789

Public Enquiries

0870 000 2288

Statistician

Anna Heyworth

Emailinfo@dfes.gsi.gov.uk**Internet**[http://www.dfes.gov.uk/
rsgateway/DB/SFR/](http://www.dfes.gov.uk/rsgateway/DB/SFR/)**PARTICIPATION IN EDUCATION, TRAINING AND
EMPLOYMENT BY 16-18 YEAR OLDS IN ENGLAND: 1985 TO
2003 (REVISED)****INTRODUCTION**

1 This Statistical First Release revises the estimates of participation in education, training and employment by 16, 17 and 18 year olds in England previously published on 17 June 2004 (SFR 18/2004). This publication also contains a revised historic time series for participation, back to 1994, and supersedes all previously released.

2 Additional tables providing more detailed breakdowns, and the full time series back to 1985, are available on the website.

3 The revisions are as a result of the publication of revised population estimates for 1991 to 2003 by the Office for National Statistics (ONS). SFR 31/2003 and SFR 18/2004 gave details of issues surrounding the use of previous versions of ONS post-Census population estimates for single years of age. The revised population estimates are more in line with trends observed in 14-year old pupil counts for the relevant cohorts. Further information can be found after the Key Points section.



KEY POINTS

4 The key points to be drawn from the estimates published in this SFR are given below. These are taken from Tables 1, 3 and 5. Further information can be found in Tables 2 (by institution type) and 4 (by qualification aim).

16 year olds

- The proportion of 16 year olds, the first post-compulsory year, in full-time education at the end of 2003 is estimated at 71.8 per cent, the same as at end 2002, and a slight increase from 71.7 per cent at end 1994.
- At end 2003, 86.5 per cent of 16 year olds were participating in education and training, an increase from 86.0 per cent at end 2002 and a decrease from 90.6 per cent at end 1994. This covers young people in full-time or part-time education, in Government Supported Training, or receiving employer funded or other training.

17 and 18 year olds

- Participation in full-time education by 17 year olds was 59.5 per cent at end 2003, an increase from 58.5 per cent at end 2002. However, it has remained broadly level since 1994, when it was 59.5 per cent. Participation in education and training decreased after 1994 (when it was 82.0 per cent), but has increased in the latest year, from 77.7 per cent at end 2002 to 79.3 per cent at end 2003.
- Participation in full-time education by 18 year olds at end 2003 was 37.1 per cent, a slight increase from 37.0 per cent at end 2002, but a decrease when compared with 39.1 per cent at end 1994. Participation in education and training at end 2003 was 59.6 per cent; at end 2002 it was 59.4 per cent. At end 1994, 60.6 per cent of 18 year olds were participating in education and training.

16-18 year olds

- The proportion of 16-18 year olds in education and training was 75.1 per cent at end 2003, an increase from 74.4 per cent at end 2002, and a decrease from 77.7 per cent at end 1994.
- The proportion of 16-18 year olds that are not in education, employment or training (NEET) at end 2003 was 9 per cent, 182 thousand, a fall from 10 per cent at end 2002. The proportion of 16-18 year olds NEET has remained broadly level since the mid 1990s, at end 1994 it was 9 per cent.

POPULATION ESTIMATES USED IN THIS PUBLICATION

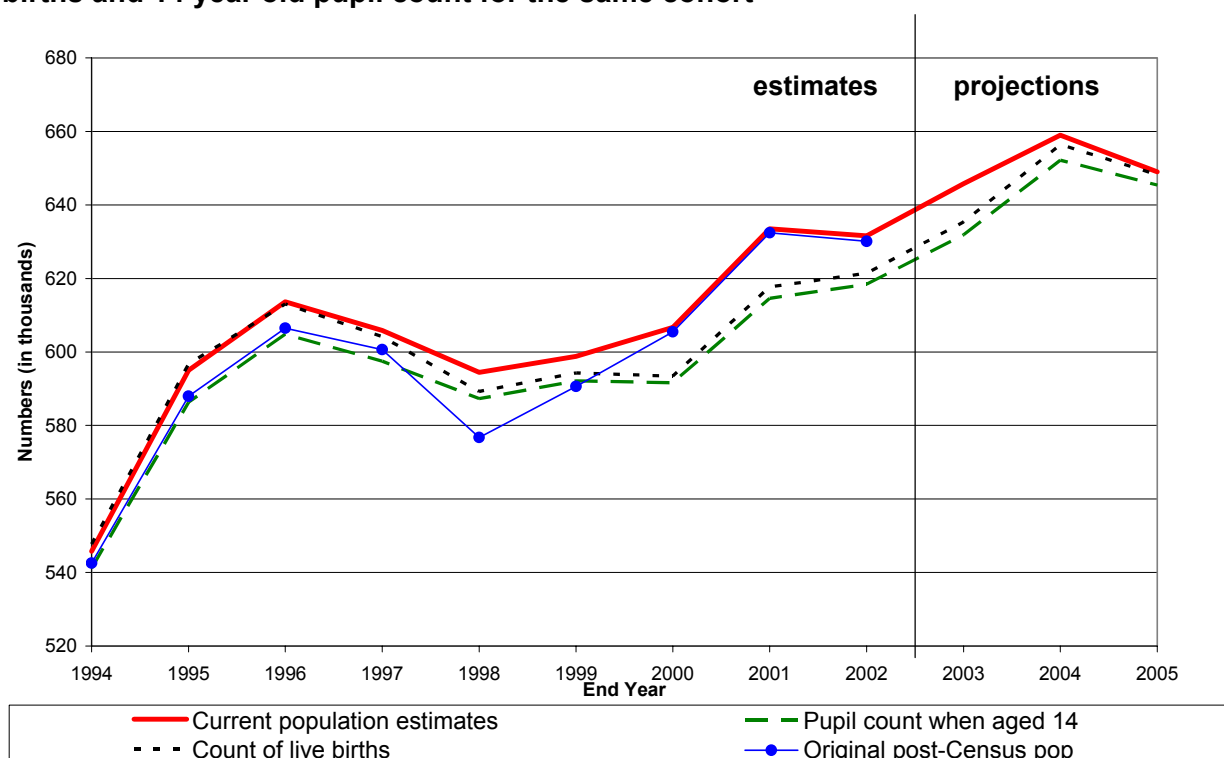
5 Information about the six different data sources used to produce the participation estimates in this publication is given in the “Notes to Editors” Section (page 5). Population estimates and projections form one of these sources; they are used as the denominator to produce the percentages published here.

6 The post-Census revisions to the population estimates and projections, in spring 2003, revealed issues when comparing them against the Department’s pupil count and ONS’s own figures for births. These were set out in SFR 31/2003 (published 20 November 2003).

7 ONS has since revised the population estimates and the latest information is used in this release – population estimates published by ONS on 9 September 2004 (revisions to population estimates for 2001 to 2003) and on 7 October 2004 (historic population estimates 1991-2001); and population projections published by GAD on 30 September 2004.

8 A comparison of these population estimates/projections for 16 year olds with the corresponding birth count and 14 year old pupil count for the same cohort, as well as the original post-Census population estimates, is given in chart A.

Chart A: Comparison of 16 year old population estimates/ projections with the count of live births and 14 year old pupil count for the same cohort



9 This chart shows that the birth count and 14 year old pupil count for this cohort have very similar trends, and whilst the population estimates used in this publication do have some differences in trend (mainly between 1999 and 2000), these are much improved on the original post-Census population estimates. The chart also illustrates that the population estimates for future years appear in line with the trends seen in the other sources.

10 The trends in the population estimates for 17 and 18 year olds are similar to those seen in Chart A for 16 year olds. Therefore, the main differences in trend are seen between 2000 and 2001 for 17 year olds; and between 2001 and 2002 for 18 year olds. As a result, participation estimates may be slightly underestimated for this cohort and footnotes have been placed in the time series tables to note this.

11 ONS have published 95 per cent confidence intervals of $\pm 0.5\%$ for the 2001 Census population estimates for the age group 15-19. Confidence intervals for single years of age will be somewhat higher than this. Therefore, most differences in trend to be seen in Chart A will fall within the error margins for the population estimates.

12 Further information on population estimates can be found on the National Statistics website at www.statistics.gov.uk/popest.

NOTES TO EDITORS

13 The estimates of participation in education, training and employment combine data from a number of sources, with procedures to identify young people in more than one form of provision, to give a view of the cohort as a whole.

A. DEFINITIONS

Academic Age

14 The age of a learner is measured at the beginning of the academic year, 31 August.

Reference Dates

15 The population, schools and work based learning (WBL) data described as end 2003 relate to January 2004; Further Education Institution (FEI) data relate to November 2003; and Higher Education Institution (HEI) data relate to December 2003. The Labour Force Survey (LFS) relates to the winter quarter (December 2003 to February 2004). The end 2002 figures for the different data sources similarly refer to the same months.

16 The figures for end 2003 are provisional. The figures for end 2002 have been updated with revised figures from all sources. Some 2002 data may be revised again next year - see the following paragraphs for definitions; sources are presented more fully under section B.

Education

17 The definition of full-time education varies according to institution type:

Schools: a full-time pupil is someone studying 10 sessions a week, where a session is 1/2 day. Prior to 2002, all pupils were recorded as full-time;

FEIs: full-time full-year learners are defined as those enrolled on programmes of at least 450 guided learning hours per year, or for at least 150 guided learning hours per tri-annual period or more than 16 guided learning hours per week for shorter courses. Full-time learners who are not classified as full-time full-year are classified as other full-time. See www.lsc.gov.uk for more information;

HEIs: full-time full-year students are defined as those studying 21 hours a week for 24 weeks. Full-time students who are not classified as full-time full-year are classified as other full-time. See www.hesa.ac.uk for more information.

18 Figures exclude learners studying overseas, and learners from overseas studying in HEIs in England. Full-time learners in independent further and higher education establishments are excluded from full-time education, but included (but not reported separately) in other education and training (OET).

19 Young people studying a FE course in addition to taking part in WBL in the same FEI, are included in both full-time education and WBL, but are also reported separately as the overlap group and are only counted once in the totals. Those doing WBL in FEIs are in the WBL information only. Others in publicly funded full-time education while in Employer Funded Training (EFT) are included in full-time education but not reported separately; they are not included in the EFT figures.

Government Supported Work Based Learning for Young People (WBL)

20 WBL for young people comprises of Advanced Apprenticeships, Apprenticeships, Entry to Employment (E2E), and NVQ Learning. Since 26 March 2001, WBL has been funded through the Learning and Skills Council (LSC).

Employer Funded Training (EFT)

21 Figures for EFT cover employees who have received training in the past 4 weeks; these figures are restricted to training other than WBL. They will include non-WBL apprentices and others on long and short term training programmes, but exclude those who have previously received training in their current job, though not in the last 4 weeks. They cover only young people who are in employment.

Other Education and Training (OET)

22 OET covers young people studying, but not included in other categories. For example: attending independent colleges or training centres; at any college in part-time study not reported as released from a job; or receiving training or in part-time education but not currently employed.

Labour market status

23 The definitions of labour market status used in the Labour Force Survey (LFS), and in this publication, follow the conventions promoted by the International Labour Organisation (ILO):

in employment - an employee, self-employed, on a WBL programme or an unpaid family worker. This includes young people in full-time education who also have part-time jobs.

ILO unemployed - anyone (including full-time learners) who is out of work and available to start work in the next two weeks, but has either looked for work in the last four weeks or is waiting to start a job they have already obtained.

economically inactive - neither in employment nor ILO unemployed, that is - not active in the labour market.

24 The LFS covers all residential households and nursing accommodation. Householders are asked to reply on behalf of students living away in halls of residence. The LFS excludes people outside such accommodation - chiefly hospital residents, people in prison, people in army barracks and the homeless.

25 As the LFS is a sample survey, all estimates of labour market participation are subject to sampling error, as are the estimates for the non-college based components of EFT and OET.

Courses of study (Tables 4a - 4d)

26 Tables 4a - 4d include a breakdown by course of study, which are categorised as shown below. The second list gives the hierarchy of qualification aim used for pupils in independent schools; the first list is used for learners in all other types of institution. Learners in full-time education studying on more than one course are attributed to the course appearing first in the list below. Young people in Pupil Referral Units (PRUs), for whom there is no qualification breakdown is available, are included under 'Other courses' in tables 4a-d.

All Institutions, except independent schools:Course studied in order of selection:

Higher education
NVQ 3
VCE A/AS level/Advanced GNVQ
GCE A/AS level
Other courses at level 3 or equivalent¹
NVQ 2
Intermediate GNVQ
GCSE
Other courses at level 2 or equivalent¹
NVQ 1
Foundation GNVQ
Other courses at level 1 or equivalent¹
Other course – level unknown or unspecified

Entered in tables to the row headed:

Higher education
NVQ 3
VCE A/AS level
GCE A/AS level
NVQ 3 equivalents
NVQ 2
Intermediate GNVQ
GCSE
NVQ 2 equivalents
NVQ 1
Foundation GNVQ
NVQ 1 equivalents
Other courses

Independent schools:Course studied in order of selection:

Higher education
VCE A/AS level/Advanced GNVQ
Other courses at level 3 or equivalent¹
NVQ 3
GCE A level
GCE AS level
Intermediate GNVQ
Other courses at level 2 or equivalent¹
NVQ 2
Foundation GNVQ
NVQ 1
GCSE
Other course – level unknown or unspecified

Entered in tables to the row headed:

Higher education
VCE A/AS level
NVQ 3 equivalents
NVQ 3
GCE A/AS level
GCE A/AS level
Intermediate GNVQ
NVQ 2 equivalents
NVQ 2
Foundation GNVQ
NVQ 1
GCSE
Other courses

¹ Including GNVQ precursors, BTEC, City and Guilds and RSA courses

B. DATA SOURCES

Box: Data Sources

| | |
|----------------------|---|
| Schools | <p>The Schools' Census provides data on school pupils in January of each year. Information for maintained schools, City Technology Colleges (CTCs), Academies and special schools are derived from the Pupil Level Annual Schools' Census (PLASC). PLASC collects data at pupil rather than school level; the first time in January 2002. Data from the remaining types of institution (independent schools and pupil referral units) are still collected at school level.</p> <p>The schools figures for end 2003 are provisional and will be revised in next year's publication. Figures for end 2002 and end 2001 are final.</p> |
| FE Institutions | <p>The Learning and Skills Council's Individualised Student/Learner Record (ISR/ILR) provides data on learners in FE sector colleges. Snapshot data as at 1 November has been used. The data underlying this Statistical First Release are the same as for the Statistical First Release published by LSC on 31 March.</p> <p>The ILR data for 2003 has been grossed up to provide estimates of the total provision in the sector and will be revised in next year's publication. Figures for 2002 are revised and will be finalised in next year's publication. Figures for 2001 are final.</p> |
| HE Institutions | <p>Students in institutions of higher education on 1 December are included from data supplied by the Higher Education Statistics Agency (HESA). Figures for end 2002 are final.</p> <p>Out-turn figures for end 2003 are not available until January 2005. Therefore, numbers on further education courses have been carried over from the previous year. Student numbers on higher education courses in 2002 have been grossed up to produce 2003 estimates by using information from the Higher Education Students Early Statistics (HESES – collected by the Higher Education Funding Council for England). All 2003 figures will be updated with final HESA data in the next SFR.</p> |
| WBL | <p>The Learning and Skills Council's ILR provides monthly data on young people on WBL programmes, for end 2001 onwards. Snapshot data as at 1 January has been used.</p> <p>Further information is published quarterly in a Statistical First Release: Government Supported Further Education and Work Based Learning for Young People on 1 November 2003 - Volumes.</p> |
| LFS | <p>Figures on labour market status come from the winter quarter (December 2002 to February 2003) LFS. It also supplies the non-college based data for Employer Funded Training (EFT) and for Other Education and Training (OET).</p> <p>The LFS is a quarterly survey of about 50,000 households in England. If an individual is not available for interview, another member of the household may respond on their behalf.</p> <p>LFS data were regressed in 2004 in order to better reflect the population changes over this period.</p> |
| Population estimates | <p>The population estimates for academic year ages in January of each year are derived by DfES from mid-year estimates and projections provided by the Office for National Statistics (ONS) and the Government Actuary's Department (GAD).</p> <p>The population estimates have been revised and are discussed in the section entitled "Population estimates used in this publication".</p> |

C. CHANGES TO DATA SOURCES AFFECTING THIS AND FUTURE PUBLICATIONS

27 All historic data was quality assured prior to this publication and this led to some small changes in the information from schools, FE and HE institutions. As a result, some of the differences in the figures when compared with those previously released will be due to both this process and the revisions to the population estimates.

Schools data

28 Qualification aim information has been included for special schools students in the end 2003 figures. Pupil Referral Units are now the only institution type for which we have no information on the courses being studied by pupils.

29 The method by which the qualifications information is collected for maintained, special, CTC and Academy school pupils changed in January 2003 (i.e. the end 2002 participation estimates). Prior to January 2003, qualifications information was collected for all pupils aged 16 and above (and still is in independent schools). Since January 2003, qualifications information has been collected for those pupils in year group 12 or above. This means, for example, that no qualification data is collected for those 16 year olds who are still in year 11 for January 2003 onwards. Therefore, a reduction in the numbers studying GCSEs and Intermediate GNVQs in maintained schools can be seen for end 2002 onwards, with a corresponding increase in the numbers on "other" courses (which includes missing qualification aims).

FEI data

30 The FEI information for 1994 to 2000 has been changed since it was last published in June 2002. Those students who were solely studying courses for a WBL programme have been removed, as they were also included within the WBL figures for those years. This has resulted in the removal of the break in the series at 2001.

Population data

31 See paragraphs 5-12 for information.

D. CHANGES TO THE TABLES

32 An additional table has been added to this publication, Table 5. It gives time series information for participation in education and training by 16-18 year olds.

33 The additional web tables now include time series back to 1985. The "C" tables, which give the qualification breakdown, have been changed to give a more detailed qualifications list.

E. COMPARISONS WITH OTHER PARTICIPATION DATA

Local Participation rates – Bulletin publication

34 The Department publishes an annual Statistical Bulletin showing participation in education and training of 16 and 17 year olds at local level. The latest Bulletin (issue no. 01/2004), covering end 2001, was published in February 2004 and is available to download from the DfES website at: www.dfes.gov.uk/rsgateway

35 The next local level publication will be published as a Statistical First Release. It is due to be released in March 2005, containing figures for end 2002 and provisional estimates for end 2003, as well as an historic time series.

F. FURTHER INFORMATION

36 Public enquiries about the information in this Statistical First Release should be addressed to: Mun Arthur or Anna Heyworth, Lifelong Learning Analysis Division, Department for Education and Skills, Level 6C, Sanctuary Buildings, Great Smith Street, London, SW1P 3BT. Tel: 020 7925 3716/6485.

37 Press enquiries should be addressed to 020 7925 5846.

A National Statistics publication.

National Statistics are produced to high professional standards set out in the National Statistics Code of Practice. They undergo regular quality assurance reviews to ensure that they meet customer needs. They are produced free from political interference.

For general enquiries about National Statistics publications, contact: The National Statistics public enquiry service on 020 7533 5888, minicom: 01633 812399, Email: info@statistics.gov.uk, Fax: 01633 652747, Letters: room DG/18, 1 Drummond Gate, LONDON SW1V 2QQ. You can also find National Statistics on the internet – go to www.statistics.gov.uk.

INDEX OF TABLES AND FIGURES

- Table 1:** Participation of 16-18 year olds in education and training, England, 2001 to 2003
- Table 2:** Participation of 16-18 year olds in education by institution type, England, 2001 to 2003
- Table 3:** Participation of 16-18 year olds in education and training by labour market status, England, 2001 to 2003
- Tables 4a-d:** Participation of 16-18 year olds in full-time education by highest qualification aim and institution type, and work based learning, England, 2001 to 2003
- Table 5:** Participation of 16-18 year olds in education and training in England, 1994 onwards
-
- Figure 1:** Participation of 16-18 year olds in education and training by labour market status, England, 2003
- Figure 2:** Participation of 16-18 year olds in full-time education by institution type and qualification aim, England, 2003
- Figure 3:** Participation of 16 year olds in education and training, England, 1994 to 2003
- Figure 4:** Participation of 16-18 year olds in education and training, England, 1994 to 2003

FURTHER INFORMATION

The following additional tables are available on the DfES website:

www.dfes.gov.uk/rsgateway

Participation of 16-18 year olds in education and training by age and gender, England, 1985 onwards (A1 - 15) – equivalent to Table 1 in this document.

Participation of 16-18 year olds in education by institution type, and by age and gender, England, 1985 onwards (B1 - B15) – equivalent to Table 2 in this document.

Participation of 16-18 year olds in full-time education by highest qualification aim and institution type, and work based learning, and by age and gender, England, 1985 onwards (C1 - 15) – provides a more detailed institution breakdown than Tables 4a-d.

Participation of 16-18 year olds in education and training by labour market status, and by age and gender, England, 1991 onwards (D1 - 15) – provides more detail than Table 3 in this document.

CONVENTIONS AND PRESENTATION

Symbols used in the tables as necessary to denote:

- nil or negligible
- . not applicable

Table 1: Participation of 16 to 18 year olds in education and training, England, 2001 to 2003

| End of calendar year | <i>percentage</i> | | | | | | | | |
|---|-------------------|--------------|---------------------|--------------|--------------|---------------------|----------------|----------------|---------------------|
| | Males | | | Females | | | All | | |
| | 2001 | 2002 | 2003 provisional | 2001 | 2002 | 2003 provisional | 2001 | 2002 | 2003 provisional |
| Aged 16 | | | | | | | | | |
| Full-time education | 66.6 | 67.8 | 67.3 | 75.0 | 76.0 | 76.6 | 70.7 | 71.8 | 71.8 |
| Work Based Learning (WBL) | 8.5 | 8.0 | 8.3 | 5.9 | 5.7 | 5.8 | 7.3 | 6.9 | 7.1 |
| Of which WBL in full-time education | 0.3 | 0.3 | 0.3 | 0.1 | 0.1 | 0.1 | 0.2 | 0.2 | 0.2 |
| Of which WBL in part-time education | 0.3 | 0.3 | 0.3 | 0.1 | 0.1 | 0.1 | 0.2 | 0.2 | 0.2 |
| Employer Funded Training (EFT) | 3.8 | 3.9 | 4.3 | 2.4 | 2.1 | 2.2 | 3.1 | 3.1 | 3.3 |
| Of which part-time education | 0.8 | 0.9 | 0.8 | 0.2 | 0.2 | 0.3 | 0.5 | 0.6 | 0.6 |
| Other Education and Training (OET) ¹ | 4.7 | 4.5 | 4.7 | 4.8 | 4.3 | 4.3 | 4.8 | 4.4 | 4.5 |
| Of which part-time education | 4.3 | 3.9 | 4.1 | 4.2 | 3.8 | 3.9 | 4.2 | 3.8 | 4.0 |
| Total Education and WBL² | 79.9 | 80.3 | 80.2 | 85.3 | 85.6 | 86.4 | 82.5 | 82.9 | 83.2 |
| Total Education and training³ | 83.4 | 83.9 | 84.3 | 88.0 | 88.1 | 88.8 | 85.6 | 86.0 | 86.5 |
| Not in any education or training ⁴ | 16.6 | 16.1 | 15.7 | 12.0 | 11.9 | 11.2 | 14.4 | 14.0 | 13.5 |
| All | 100.0 | 100.0 | 100.0 | 100.0 | 100.0 | 100.0 | 100.0 | 100.0 | 100.0 |
| Population (thousands) | 326.3 | 324.5 | 331.5 | 307.2 | 307.0 | 314.3 | 633.5 | 631.6 | 645.8 |
| Aged 17 | | | | | | | | | |
| Full-time education | 54.6 | 54.4 | 55.5 | 62.1 | 62.9 | 63.8 | 58.2 | 58.5 | 59.5 |
| Work Based Learning (WBL) | 11.0 | 10.3 | 10.9 | 8.1 | 7.5 | 7.8 | 9.6 | 8.9 | 9.4 |
| Of which WBL in full-time education | 0.3 | 0.3 | 0.3 | 0.1 | 0.1 | 0.1 | 0.2 | 0.2 | 0.2 |
| Of which WBL in part-time education | 0.5 | 0.5 | 0.5 | 0.2 | 0.2 | 0.2 | 0.3 | 0.3 | 0.3 |
| Employer Funded Training (EFT) | 5.6 | 5.9 | 6.1 | 4.0 | 4.1 | 4.0 | 4.8 | 5.1 | 5.1 |
| Of which part-time education | 1.1 | 1.3 | 1.3 | 0.3 | 0.3 | 0.3 | 0.7 | 0.8 | 0.8 |
| Other Education and Training (OET) ¹ | 5.6 | 5.2 | 5.6 | 5.7 | 5.5 | 5.4 | 5.6 | 5.4 | 5.5 |
| Of which part-time education | 5.2 | 4.8 | 4.9 | 5.3 | 4.9 | 4.8 | 5.2 | 4.8 | 4.8 |
| Total Education and WBL² | 71.6 | 70.6 | 72.3 | 75.8 | 75.4 | 76.7 | 73.6 | 72.9 | 74.4 |
| Total Education and training³ | 76.4 | 75.6 | 77.7 | 79.8 | 79.9 | 81.0 | 78.1 | 77.7 | 79.3 |
| Not in any education or training ⁴ | 23.6 | 24.4 | 22.3 | 20.2 | 20.1 | 19.0 | 21.9 | 22.3 | 20.7 |
| All | 100.0 | 100.0 | 100.0 | 100.0 | 100.0 | 100.0 | 100.0 | 100.0 | 100.0 |
| Population (thousands) | 315.7 | 330.0 | 327.2 | 297.4 | 310.0 | 309.5 | 613.1 | 640.0 | 636.7 |
| Aged 18⁵ | | | | | | | | | |
| Full-time education | 35.1 | 34.6 | 34.7 | 38.9 | 39.5 | 39.7 | 37.0 | 37.0 | 37.1 |
| Work Based Learning (WBL) | 10.2 | 9.5 | 10.0 | 6.9 | 6.6 | 6.7 | 8.6 | 8.1 | 8.4 |
| Of which WBL in full-time education | 0.2 | 0.2 | 0.2 | 0.0 | 0.0 | 0.0 | 0.1 | 0.1 | 0.1 |
| Of which WBL in part-time education | 0.5 | 0.4 | 0.4 | 0.1 | 0.1 | 0.1 | 0.3 | 0.3 | 0.2 |
| Employer Funded Training (EFT) | 8.9 | 8.9 | 8.9 | 6.3 | 6.6 | 6.8 | 7.6 | 7.8 | 7.9 |
| Of which part-time education | 1.5 | 1.5 | 1.4 | 0.4 | 0.4 | 0.3 | 1.0 | 1.0 | 0.9 |
| Other Education and Training (OET) ¹ | 6.9 | 6.4 | 6.2 | 7.2 | 6.9 | 6.4 | 7.0 | 6.6 | 6.3 |
| Of which part-time education | 6.1 | 5.5 | 5.3 | 6.1 | 5.7 | 5.1 | 6.1 | 5.6 | 5.2 |
| Total Education and WBL² | 52.7 | 50.9 | 51.1 | 52.3 | 52.1 | 51.8 | 52.5 | 51.5 | 51.5 |
| Total Education and training³ | 60.8 | 59.2 | 59.6 | 59.3 | 59.5 | 59.5 | 60.1 | 59.4 | 59.6 |
| Not in any education or training ⁴ | 39.2 | 40.8 | 40.4 | 40.7 | 40.5 | 40.5 | 39.9 | 40.6 | 40.4 |
| All | 100.0 | 100.0 | 100.0 | 100.0 | 100.0 | 100.0 | 100.0 | 100.0 | 100.0 |
| Population (thousands) | 308.5 | 320.3 | 333.4 | 293.5 | 301.0 | 313.4 | 602.0 | 621.3 | 646.7 |
| Aged 16-18 | | | | | | | | | |
| Full-time education | 52.4 | 52.4 | 52.4 | 58.9 | 59.6 | 60.0 | 55.6 | 55.9 | 56.1 |
| Work Based Learning (WBL) | 9.9 | 9.3 | 9.7 | 7.0 | 6.6 | 6.8 | 8.5 | 8.0 | 8.3 |
| Of which WBL in full-time education | 0.3 | 0.3 | 0.3 | 0.1 | 0.1 | 0.1 | 0.2 | 0.2 | 0.2 |
| Of which WBL in part-time education | 0.4 | 0.4 | 0.4 | 0.1 | 0.1 | 0.1 | 0.3 | 0.3 | 0.3 |
| Employer Funded Training (EFT) | 6.0 | 6.2 | 6.4 | 4.2 | 4.3 | 4.3 | 5.1 | 5.3 | 5.4 |
| Of which part-time education | 1.1 | 1.2 | 1.2 | 0.3 | 0.3 | 0.3 | 0.7 | 0.8 | 0.8 |
| Other Education and Training (OET) ¹ | 5.7 | 5.4 | 5.5 | 5.9 | 5.6 | 5.4 | 5.8 | 5.5 | 5.4 |
| Of which part-time education | 5.2 | 4.7 | 4.7 | 5.2 | 4.8 | 4.6 | 5.2 | 4.8 | 4.7 |
| Total Education and WBL² | 68.3 | 67.4 | 67.8 | 71.4 | 71.2 | 71.6 | 69.8 | 69.2 | 69.7 |
| Total Education and training³ | 73.8 | 73.0 | 73.8 | 75.9 | 76.0 | 76.4 | 74.8 | 74.4 | 75.1 |
| Not in any education or training ⁴ | 26.2 | 27.0 | 26.2 | 24.1 | 24.0 | 23.6 | 25.2 | 25.6 | 24.9 |
| All | 100.0 | 100.0 | 100.0 | 100.0 | 100.0 | 100.0 | 100.0 | 100.0 | 100.0 |
| Population (thousands) | 950.4 | 974.9 | 992.0 | 898.1 | 918.0 | 937.1 | 1,848.5 | 1,892.9 | 1,929.2 |

1 Includes part-time education not funded by employers or through WBL; also full- or part-time education in independent FE and HE institutions.

2 Total of all full-time and part-time education and WBL (less WBL in full-time education), equivalent to local level estimates for education and training.

3 Total of all full-time education and WBL (less WBL in full-time education) plus EFT and OET.

4 The remainder of the age group.

5 Participation estimates for 18 year olds may be slightly underestimated between 2001 and 2002. See paragraphs 9-11 for further information

Table 2: Participation of 16 to 18 year olds in education by institution type, England, 2001 to 2003

| End of calendar year | Males | | | Females | | | All | | |
|---|--------------|--------------|---------------------|--------------|--------------|---------------------|--------------|--------------|---------------------|
| | 2001 | 2002 | 2003 provisional | 2001 | 2002 | 2003 provisional | 2001 | 2002 | 2003 provisional |
| Aged 16 | | | | | | | | | |
| Full-time education | | | | | | | | | |
| Maintained schools ¹ | 26.4 | 27.0 | 26.9 | 30.4 | 31.0 | 31.4 | 28.4 | 29.0 | 29.1 |
| Independent schools ² | 6.3 | 6.3 | 6.2 | 6.1 | 6.3 | 6.1 | 6.2 | 6.3 | 6.2 |
| Sixth form colleges | 8.7 | 9.0 | 8.9 | 10.6 | 10.9 | 11.2 | 9.6 | 9.9 | 10.0 |
| General FE, tertiary and specialist colleges | 25.1 | 25.2 | 25.0 | 27.5 | 27.4 | 27.6 | 26.3 | 26.3 | 26.2 |
| Higher education institutions | 0.2 | 0.2 | 0.2 | 0.3 | 0.4 | 0.4 | 0.3 | 0.3 | 0.3 |
| Total | 66.6 | 67.8 | 67.3 | 75.0 | 76.0 | 76.6 | 70.7 | 71.8 | 71.8 |
| Part-time education³ | | | | | | | | | |
| Maintained schools ¹ | 0.0 | 0.0 | 0.0 | 0.0 | 0.0 | 0.0 | 0.0 | 0.0 | 0.0 |
| Independent schools ² | 0.0 | 0.0 | 0.0 | 0.0 | 0.0 | 0.0 | 0.0 | 0.0 | 0.0 |
| Sixth form colleges | 0.1 | 0.1 | 0.2 | 0.2 | 0.2 | 0.2 | 0.2 | 0.2 | 0.2 |
| General FE, tertiary and specialist colleges | 5.2 | 4.9 | 5.0 | 4.3 | 3.8 | 4.0 | 4.7 | 4.4 | 4.5 |
| Higher education institutions | 0.1 | 0.1 | 0.1 | 0.1 | 0.1 | 0.1 | 0.1 | 0.1 | 0.1 |
| Total | 5.4 | 5.1 | 5.3 | 4.6 | 4.1 | 4.3 | 5.0 | 4.6 | 4.8 |
| Full- and part-time education | | | | | | | | | |
| Maintained schools ¹ | 26.4 | 27.1 | 26.9 | 30.4 | 31.0 | 31.4 | 28.4 | 29.0 | 29.1 |
| Independent schools ² | 6.3 | 6.3 | 6.2 | 6.1 | 6.3 | 6.1 | 6.2 | 6.3 | 6.2 |
| Sixth form colleges | 8.8 | 9.1 | 9.1 | 10.8 | 11.1 | 11.4 | 9.8 | 10.1 | 10.2 |
| General FE, tertiary and specialist colleges | 30.2 | 30.0 | 30.0 | 31.8 | 31.2 | 31.6 | 31.0 | 30.6 | 30.8 |
| Higher education institutions | 0.3 | 0.3 | 0.3 | 0.4 | 0.5 | 0.5 | 0.4 | 0.4 | 0.4 |
| Total | 72.0 | 72.9 | 72.5 | 79.6 | 80.1 | 80.9 | 75.7 | 76.4 | 76.6 |
| Number of full-time students (thousands) | 217.4 | 219.9 | 223.0 | 230.5 | 233.4 | 240.7 | 447.9 | 453.3 | 463.7 |
| Number of part-time students (thousands) | 17.6 | 16.5 | 17.5 | 14.0 | 12.6 | 13.4 | 31.6 | 29.2 | 30.9 |
| Population (thousands) | 326.3 | 324.5 | 331.5 | 307.2 | 307.0 | 314.3 | 633.5 | 631.6 | 645.8 |
| Aged 17 | | | | | | | | | |
| Full-time education | | | | | | | | | |
| Maintained schools ¹ | 20.5 | 20.1 | 20.5 | 24.0 | 23.9 | 24.6 | 22.2 | 21.9 | 22.5 |
| Independent schools ² | 5.8 | 5.8 | 5.9 | 5.7 | 5.8 | 5.9 | 5.8 | 5.8 | 5.9 |
| Sixth form colleges | 7.0 | 7.2 | 7.4 | 8.7 | 9.1 | 9.1 | 7.8 | 8.1 | 8.2 |
| General FE, tertiary and specialist colleges | 20.8 | 20.9 | 21.2 | 23.1 | 23.5 | 23.5 | 21.9 | 22.2 | 22.3 |
| Higher education institutions | 0.4 | 0.4 | 0.4 | 0.7 | 0.7 | 0.7 | 0.6 | 0.6 | 0.6 |
| Total | 54.6 | 54.4 | 55.5 | 62.1 | 62.9 | 63.8 | 58.2 | 58.5 | 59.5 |
| Part-time education³ | | | | | | | | | |
| Maintained schools ¹ | 0.0 | 0.0 | 0.0 | 0.0 | 0.0 | 0.0 | 0.0 | 0.0 | 0.0 |
| Independent schools ² | 0.0 | 0.0 | 0.0 | 0.0 | 0.0 | 0.0 | 0.0 | 0.0 | 0.0 |
| Sixth form colleges | 0.2 | 0.2 | 0.2 | 0.3 | 0.2 | 0.3 | 0.2 | 0.2 | 0.3 |
| General FE, tertiary and specialist colleges | 6.5 | 6.3 | 6.4 | 5.4 | 4.9 | 4.8 | 6.0 | 5.7 | 5.6 |
| Higher education institutions | 0.1 | 0.1 | 0.1 | 0.1 | 0.1 | 0.1 | 0.1 | 0.1 | 0.1 |
| Total | 6.8 | 6.6 | 6.7 | 5.8 | 5.3 | 5.3 | 6.3 | 6.0 | 6.0 |
| Full- and part-time education | | | | | | | | | |
| Maintained schools ¹ | 20.5 | 20.1 | 20.5 | 24.0 | 23.9 | 24.6 | 22.2 | 21.9 | 22.5 |
| Independent schools ² | 5.8 | 5.8 | 5.9 | 5.7 | 5.8 | 5.9 | 5.8 | 5.8 | 5.9 |
| Sixth form colleges | 7.2 | 7.4 | 7.6 | 8.9 | 9.3 | 9.4 | 8.0 | 8.3 | 8.5 |
| General FE, tertiary and specialist colleges | 27.3 | 27.3 | 27.6 | 28.5 | 28.4 | 28.3 | 27.9 | 27.8 | 27.9 |
| Higher education institutions | 0.5 | 0.5 | 0.5 | 0.8 | 0.8 | 0.9 | 0.7 | 0.7 | 0.7 |
| Total | 61.4 | 61.1 | 62.2 | 67.9 | 68.2 | 69.1 | 64.6 | 64.5 | 65.6 |
| Number of full-time students (thousands) | 172.3 | 179.7 | 181.4 | 184.8 | 194.8 | 197.6 | 357.0 | 374.5 | 379.0 |
| Number of part-time students (thousands) | 21.5 | 21.9 | 22.0 | 17.3 | 16.5 | 16.3 | 38.8 | 38.3 | 38.3 |
| Population (thousands) | 315.7 | 330.0 | 327.2 | 297.4 | 310.0 | 309.5 | 613.1 | 640.0 | 636.7 |

1 Includes all pupils in maintained schools and maintained special schools.

2 Includes all pupils in independent schools, non-maintained special schools, city technology colleges, academies and pupil referral units.

3 Total of those studying part-time education as part of WBL, EFT and OET.

Table 2: Participation of 16 to 18 year olds in education by institution type, England, 2001 to 2003
Continued

| End of calendar year | Males | | | Females | | | All | | |
|---|--------------|--------------|---------------------|--------------|--------------|---------------------|----------------|----------------|---------------------|
| | 2001 | 2002 | 2003 provisional | 2001 | 2002 | 2003 provisional | 2001 | 2002 | 2003 provisional |
| Aged 18⁴ | | | | | | | | | |
| Full-time education | | | | | | | | | |
| Maintained schools ¹ | 2.1 | 2.3 | 2.2 | 1.8 | 1.9 | 2.0 | 1.9 | 2.1 | 2.1 |
| Independent schools ² | 1.0 | 1.0 | 1.0 | 0.8 | 0.9 | 0.9 | 0.9 | 0.9 | 0.9 |
| Sixth form colleges | 1.4 | 1.4 | 1.4 | 1.1 | 1.2 | 1.3 | 1.2 | 1.3 | 1.4 |
| General FE, tertiary and specialist colleges | 12.3 | 11.9 | 12.2 | 11.7 | 11.8 | 12.1 | 12.0 | 11.9 | 12.1 |
| Higher education institutions | 18.4 | 18.0 | 17.8 | 23.4 | 23.7 | 23.4 | 20.8 | 20.8 | 20.5 |
| Total | 35.1 | 34.6 | 34.7 | 38.9 | 39.5 | 39.7 | 37.0 | 37.0 | 37.1 |
| Part-time education³ | | | | | | | | | |
| Maintained schools ¹ | 0.0 | 0.0 | 0.0 | 0.0 | 0.0 | 0.0 | 0.0 | 0.0 | 0.0 |
| Independent schools ² | 0.0 | 0.0 | 0.0 | 0.0 | 0.0 | 0.0 | 0.0 | 0.0 | 0.0 |
| Sixth form colleges | 0.2 | 0.2 | 0.2 | 0.3 | 0.3 | 0.3 | 0.2 | 0.2 | 0.3 |
| General FE, tertiary and specialist colleges | 7.4 | 6.8 | 6.5 | 6.1 | 5.6 | 5.0 | 6.8 | 6.2 | 5.7 |
| Higher education institutions | 0.4 | 0.4 | 0.4 | 0.3 | 0.3 | 0.3 | 0.3 | 0.3 | 0.3 |
| Total | 8.0 | 7.4 | 7.1 | 6.7 | 6.2 | 5.6 | 7.4 | 6.8 | 6.3 |
| Full- and part-time education | | | | | | | | | |
| Maintained schools ¹ | 2.1 | 2.3 | 2.2 | 1.8 | 1.9 | 2.0 | 1.9 | 2.1 | 2.1 |
| Independent schools ² | 1.0 | 1.0 | 1.0 | 0.8 | 0.9 | 0.9 | 0.9 | 0.9 | 0.9 |
| Sixth form colleges | 1.5 | 1.6 | 1.6 | 1.4 | 1.5 | 1.6 | 1.5 | 1.6 | 1.6 |
| General FE, tertiary and specialist colleges | 19.8 | 18.8 | 18.6 | 17.9 | 17.4 | 17.1 | 18.8 | 18.1 | 17.9 |
| Higher education institutions | 18.8 | 18.4 | 18.2 | 23.6 | 24.0 | 23.7 | 21.2 | 21.1 | 20.8 |
| Total | 43.2 | 42.1 | 41.7 | 45.5 | 45.6 | 45.2 | 44.3 | 43.8 | 43.4 |
| Number of full-time students (thousands) | 108.4 | 111.0 | 115.5 | 114.1 | 118.8 | 124.3 | 222.5 | 229.7 | 239.9 |
| Number of part-time students (thousands) | 24.7 | 23.7 | 23.5 | 19.6 | 18.6 | 17.4 | 44.3 | 42.3 | 41.0 |
| Population (thousands) | 308.5 | 320.3 | 333.4 | 293.5 | 301.0 | 313.4 | 602.0 | 621.3 | 646.7 |
| Aged 16-18 | | | | | | | | | |
| Full-time education | | | | | | | | | |
| Maintained schools ¹ | 16.6 | 16.5 | 16.5 | 18.9 | 19.1 | 19.3 | 17.7 | 17.8 | 17.9 |
| Independent schools ² | 4.4 | 4.4 | 4.4 | 4.2 | 4.3 | 4.3 | 4.3 | 4.4 | 4.3 |
| Sixth form colleges | 5.7 | 5.9 | 5.9 | 6.9 | 7.1 | 7.2 | 6.3 | 6.5 | 6.5 |
| General FE, tertiary and specialist colleges | 19.5 | 19.4 | 19.4 | 20.9 | 21.0 | 21.1 | 20.2 | 20.1 | 20.2 |
| Higher education institutions | 6.2 | 6.2 | 6.2 | 8.0 | 8.2 | 8.2 | 7.1 | 7.1 | 7.2 |
| Total | 52.4 | 52.4 | 52.4 | 58.9 | 59.6 | 60.0 | 55.6 | 55.9 | 56.1 |
| Part-time education³ | | | | | | | | | |
| Maintained schools ¹ | 0.0 | 0.0 | 0.0 | 0.0 | 0.0 | 0.0 | 0.0 | 0.0 | 0.0 |
| Independent schools ² | 0.0 | 0.0 | 0.0 | 0.0 | 0.0 | 0.0 | 0.0 | 0.0 | 0.0 |
| Sixth form colleges | 0.2 | 0.2 | 0.2 | 0.2 | 0.2 | 0.3 | 0.2 | 0.2 | 0.2 |
| General FE, tertiary and specialist colleges | 6.4 | 6.0 | 6.0 | 5.3 | 4.8 | 4.6 | 5.8 | 5.4 | 5.3 |
| Higher education institutions | 0.2 | 0.2 | 0.2 | 0.2 | 0.2 | 0.2 | 0.2 | 0.2 | 0.2 |
| Total | 6.7 | 6.4 | 6.4 | 5.7 | 5.2 | 5.0 | 6.2 | 5.8 | 5.7 |
| Full- and part-time education | | | | | | | | | |
| Maintained schools ¹ | 16.6 | 16.5 | 16.5 | 18.9 | 19.1 | 19.3 | 17.7 | 17.8 | 17.9 |
| Independent schools ² | 4.4 | 4.4 | 4.4 | 4.2 | 4.3 | 4.3 | 4.3 | 4.4 | 4.3 |
| Sixth form colleges | 5.9 | 6.1 | 6.1 | 7.1 | 7.3 | 7.5 | 6.5 | 6.7 | 6.8 |
| General FE, tertiary and specialist colleges | 25.9 | 25.4 | 25.4 | 26.2 | 25.7 | 25.7 | 26.0 | 25.6 | 25.5 |
| Higher education institutions | 6.4 | 6.3 | 6.4 | 8.1 | 8.3 | 8.4 | 7.2 | 7.3 | 7.4 |
| Total | 59.1 | 58.7 | 58.8 | 64.6 | 64.8 | 65.1 | 61.8 | 61.7 | 61.8 |
| Number of full-time students (thousands) | 498.1 | 510.5 | 519.9 | 529.3 | 547.0 | 562.7 | 1,027.5 | 1,057.5 | 1,082.6 |
| Number of part-time students (thousands) | 63.8 | 62.2 | 63.0 | 50.8 | 47.7 | 47.2 | 114.6 | 109.8 | 110.2 |
| Population (thousands) | 950.4 | 974.9 | 992.0 | 898.1 | 918.0 | 937.1 | 1,848.5 | 1,892.9 | 1,929.2 |

1 Includes all pupils in maintained schools and maintained special schools.

2 Includes all pupils in independent schools, non-maintained special schools, city technology colleges, academies and pupil referral units.

3 Total of those studying part-time education as part of WBL, EFT and OET.

4 Participation estimates for 18 year olds may be slightly underestimated between 2001 and 2002. See paragraphs 9-11 for further information

Table 3: Participation of 16 to 18 year olds in education and training by labour market status, England, 2001 to 2003

| End of calendar year | percentage | | | | | | | | | | | | Not in employment ² | | |
|---|---------------|--------------|---------------------|-----------------------------|------------|---------------------|------------|------------|---------------------|--------------|--------------|---------------------|--------------------------------|------------|---------------------|
| | In employment | | | ILO unemployed ¹ | | | Inactive | | | All | | | | | |
| | 2001 | 2002 | 2003 provisional | 2001 | 2002 | 2003 provisional | 2001 | 2002 | 2003 provisional | 2001 | 2002 | 2003 provisional | 2001 | 2002 | 2003 provisional |
| Aged 16 | | | | | | | | | | | | | | | |
| Education and training | | | | | | | | | | | | | | | |
| Full-time education | 30 | 32 | 28 | 4 | 5 | 6 | 37 | 35 | 37 | 71 | 72 | 72 | 40 | 40 | 44 |
| Work Based Learning (WBL) | 7 | 7 | 7 | 0 | 0 | 0 | 0 | 0 | 0 | 7 | 7 | 7 | 0 | 0 | 0 |
| Employer Funded Training (EFT) | 3 | 3 | 3 | 0 | 0 | 0 | 0 | 0 | 0 | 3 | 3 | 3 | 0 | 0 | 0 |
| Other education and training (OET) ³ | 2 | 1 | 2 | 1 | 1 | 1 | 2 | 2 | 2 | 5 | 4 | 5 | 3 | 3 | 3 |
| Total Education and training⁴ | 42 | 43 | 40 | 4 | 6 | 7 | 39 | 37 | 40 | 86 | 86 | 87 | 44 | 43 | 47 |
| Not in any education or training ⁵ | 7 | 6 | 5 | 5 | 6 | 5 | 2 | 2 | 3 | 14 | 14 | 13 | 7 | 8 | 8 |
| All | 49 | 49 | 45 | 10 | 12 | 13 | 41 | 39 | 42 | 100 | 100 | 100 | 51 | 51 | 55 |
| Population (thousands) | 311 | 308 | 291 | 60 | 76 | 81 | 262 | 248 | 274 | 634 | 632 | 646 | 322 | 324 | 355 |
| Aged 17 | | | | | | | | | | | | | | | |
| Education and training | | | | | | | | | | | | | | | |
| Full-time education | 31 | 30 | 31 | 2 | 3 | 3 | 26 | 25 | 26 | 58 | 59 | 60 | 27 | 28 | 29 |
| Work Based Learning (WBL) | 10 | 9 | 9 | 0 | 0 | 0 | 0 | 0 | 0 | 10 | 9 | 9 | 0 | 0 | 0 |
| Employer Funded Training (EFT) | 5 | 5 | 5 | 0 | 0 | 0 | 0 | 0 | 0 | 5 | 5 | 5 | 0 | 0 | 0 |
| Other education and training (OET) ³ | 2 | 2 | 2 | 1 | 1 | 2 | 2 | 2 | 2 | 6 | 5 | 6 | 3 | 3 | 3 |
| Total Education and training⁴ | 48 | 46 | 47 | 3 | 4 | 4 | 27 | 27 | 28 | 78 | 78 | 79 | 31 | 31 | 32 |
| Not in any education or training ⁵ | 12 | 13 | 13 | 6 | 6 | 4 | 3 | 3 | 3 | 22 | 22 | 21 | 10 | 9 | 7 |
| All | 60 | 60 | 61 | 10 | 10 | 9 | 31 | 31 | 31 | 100 | 100 | 100 | 40 | 40 | 39 |
| Population (thousands) | 366 | 382 | 385 | 59 | 63 | 54 | 188 | 195 | 197 | 613 | 640 | 637 | 247 | 258 | 251 |
| Aged 18⁶ | | | | | | | | | | | | | | | |
| Education and training | | | | | | | | | | | | | | | |
| Full-time education | 14 | 14 | 14 | 3 | 2 | 2 | 20 | 21 | 21 | 37 | 37 | 37 | 23 | 23 | 23 |
| Work Based Learning (WBL) | 9 | 8 | 8 | 0 | 0 | 0 | 0 | 0 | 0 | 9 | 8 | 8 | 0 | 0 | 0 |
| Employer Funded Training (EFT) | 8 | 8 | 8 | 0 | 0 | 0 | 0 | 0 | 0 | 8 | 8 | 8 | 0 | 0 | 0 |
| Other education and training (OET) ³ | 4 | 3 | 3 | 1 | 1 | 1 | 2 | 2 | 2 | 7 | 7 | 6 | 3 | 3 | 3 |
| Total Education and training⁴ | 34 | 33 | 34 | 4 | 4 | 3 | 22 | 23 | 23 | 60 | 59 | 60 | 26 | 27 | 26 |
| Not in any education or training ⁵ | 28 | 28 | 28 | 7 | 6 | 6 | 5 | 6 | 6 | 40 | 41 | 40 | 12 | 13 | 13 |
| All | 62 | 61 | 61 | 11 | 10 | 9 | 27 | 29 | 29 | 100 | 100 | 100 | 38 | 39 | 39 |
| Population (thousands) | 375 | 377 | 397 | 64 | 62 | 60 | 163 | 182 | 189 | 602 | 621 | 647 | 227 | 244 | 249 |
| Aged 16-18 | | | | | | | | | | | | | | | |
| Education and training | | | | | | | | | | | | | | | |
| Full-time education | 25 | 25 | 24 | 3 | 3 | 4 | 28 | 27 | 28 | 56 | 56 | 56 | 30 | 31 | 32 |
| Work Based Learning (WBL) | 8 | 8 | 8 | 0 | 0 | 0 | 0 | 0 | 0 | 8 | 8 | 8 | 0 | 0 | 0 |
| Employer Funded Training (EFT) | 5 | 5 | 5 | 0 | 0 | 0 | 0 | 0 | 0 | 5 | 5 | 5 | 0 | 0 | 0 |
| Other education and training (OET) ³ | 3 | 2 | 2 | 1 | 1 | 1 | 2 | 2 | 2 | 6 | 5 | 5 | 3 | 3 | 3 |
| Total Education and training⁴ | 41 | 41 | 40 | 4 | 5 | 5 | 30 | 29 | 30 | 75 | 74 | 75 | 33 | 34 | 35 |
| Not in any education or training ⁵ | 16 | 16 | 15 | 6 | 6 | 5 | 4 | 4 | 4 | 25 | 26 | 25 | 10 | 10 | 9 |
| All | 57 | 56 | 56 | 10 | 11 | 10 | 33 | 33 | 34 | 100 | 100 | 100 | 43 | 44 | 44 |
| Population (thousands) | 1,052 | 1,067 | 1,073 | 183 | 200 | 195 | 614 | 625 | 661 | 1,849 | 1,893 | 1,929 | 797 | 826 | 856 |

1 Available to start work in the next two weeks and has either looked for work in the last four weeks or is waiting to start a job already obtained.

2 The sum of those young people who are ILO unemployed or inactive. Therefore, the figures in this column for young people not in any education or training are the NEET figures.

3 Includes part-time education not funded by employers or through WBL; also full- or part-time education in independent FE and HE institutions.

4 Total of all full-time education and WBL (less WBL in full-time education) plus EFT and OET

5 The remainder of the age group.

6 Participation estimates for 18 year olds may be slightly underestimated between 2001 and 2002. See paragraphs 9-11 for further information

Table 4a: Participation of 16 year olds in full-time education by highest qualification aim and institution type, and work based learning, England, 2001 to 2003

| End of calendar year | percentage | | | | | | | | |
|--|--------------|--------------|---------------------|--------------|--------------|---------------------|--------------|--------------|---------------------|
| | Males | | | Females | | | All | | |
| | 2001 | 2002 | 2003 provisional | 2001 | 2002 | 2003 provisional | 2001 | 2002 | 2003 provisional |
| Full-time education | 66.6 | 67.8 | 67.3 | 75.0 | 76.0 | 76.6 | 70.7 | 71.8 | 71.8 |
| Higher Education (Level 4 and above) | 0.1 | 0.1 | 0.0 | 0.1 | 0.2 | 0.1 | 0.1 | 0.1 | 0.1 |
| Maintained schools ¹ | 0.0 | 0.0 | 0.0 | 0.0 | 0.0 | 0.0 | 0.0 | 0.0 | 0.0 |
| Independent schools ² | 0.0 | 0.0 | 0.0 | 0.1 | 0.1 | 0.1 | 0.1 | 0.1 | 0.0 |
| Sixth form colleges | 0.0 | 0.0 | 0.0 | 0.0 | 0.0 | 0.0 | 0.0 | 0.0 | 0.0 |
| General FE, tertiary and specialist colleges | 0.0 | 0.0 | 0.0 | 0.1 | 0.1 | 0.0 | 0.0 | 0.1 | 0.0 |
| Higher education institutions | 0.0 | 0.0 | 0.0 | 0.0 | 0.0 | 0.0 | 0.0 | 0.0 | 0.0 |
| Further Education | 66.6 | 67.7 | 67.2 | 74.9 | 75.8 | 76.5 | 70.6 | 71.6 | 71.7 |
| Maintained schools ¹ | 26.3 | 26.9 | 26.8 | 30.2 | 30.9 | 31.2 | 28.2 | 28.8 | 28.9 |
| Independent schools ² | 6.2 | 6.3 | 6.2 | 6.1 | 6.2 | 6.0 | 6.1 | 6.2 | 6.1 |
| Sixth form colleges | 8.6 | 8.9 | 8.9 | 10.6 | 10.8 | 11.1 | 9.6 | 9.9 | 10.0 |
| General FE, tertiary and specialist colleges | 22.3 | 22.7 | 22.7 | 24.0 | 23.7 | 23.5 | 23.1 | 23.2 | 23.1 |
| Higher education institutions | 0.2 | 0.2 | 0.2 | 0.3 | 0.3 | 0.3 | 0.2 | 0.2 | 0.2 |
| Level 3 | 44.7 | 45.5 | 45.0 | 55.4 | 55.8 | 56.1 | 49.9 | 50.5 | 50.4 |
| GCE A/AS level | 34.2 | 34.9 | 33.4 | 41.6 | 42.0 | 41.1 | 37.8 | 38.4 | 37.1 |
| All schools | 24.2 | 24.8 | 23.6 | 27.9 | 28.5 | 27.5 | 26.0 | 26.6 | 25.5 |
| Sixth form colleges | 6.1 | 6.3 | 6.2 | 7.7 | 7.8 | 8.0 | 6.8 | 7.0 | 7.1 |
| Other FHE institutions | 3.9 | 3.8 | 3.6 | 6.0 | 5.7 | 5.6 | 4.9 | 4.7 | 4.6 |
| VCE A/AS level or Advanced GNVQ | 6.5 | 6.1 | 6.6 | 8.3 | 7.8 | 8.5 | 7.4 | 6.9 | 7.5 |
| All schools | 3.0 | 3.1 | 4.1 | 3.6 | 3.6 | 4.9 | 3.3 | 3.4 | 4.5 |
| Sixth form colleges | 0.9 | 1.0 | 1.0 | 1.4 | 1.4 | 1.5 | 1.2 | 1.2 | 1.3 |
| Other FHE institutions | 2.5 | 2.0 | 1.4 | 3.4 | 2.7 | 2.1 | 2.9 | 2.3 | 1.7 |
| NVQ 3 and equivalents | 4.0 | 4.5 | 5.0 | 5.5 | 6.0 | 6.6 | 4.7 | 5.2 | 5.8 |
| All schools | 0.1 | 0.0 | 0.1 | 0.1 | 0.1 | 0.1 | 0.1 | 0.1 | 0.1 |
| Sixth form colleges | 0.2 | 0.2 | 0.2 | 0.3 | 0.3 | 0.3 | 0.2 | 0.3 | 0.2 |
| Other FHE institutions | 3.8 | 4.2 | 4.8 | 5.1 | 5.7 | 6.2 | 4.4 | 4.9 | 5.5 |
| Level 2 | 15.0 | 14.1 | 12.9 | 14.9 | 14.1 | 13.8 | 14.9 | 14.1 | 13.3 |
| GCSE | 2.7 | 2.3 | 2.2 | 2.3 | 2.1 | 1.9 | 2.5 | 2.2 | 2.1 |
| All schools | 1.3 | 0.9 | 0.9 | 1.1 | 0.8 | 0.7 | 1.2 | 0.8 | 0.8 |
| Sixth form colleges | 0.3 | 0.3 | 0.4 | 0.3 | 0.3 | 0.2 | 0.3 | 0.3 | 0.3 |
| Other FHE institutions | 1.1 | 1.1 | 1.0 | 1.0 | 1.1 | 1.0 | 1.0 | 1.1 | 1.0 |
| Intermediate GNVQ | 6.6 | 5.9 | 4.6 | 5.8 | 5.2 | 4.4 | 6.2 | 5.5 | 4.5 |
| All schools | 2.5 | 2.3 | 2.0 | 2.3 | 2.2 | 1.9 | 2.4 | 2.3 | 1.9 |
| Sixth form colleges | 0.9 | 0.9 | 0.8 | 0.7 | 0.7 | 0.7 | 0.8 | 0.8 | 0.8 |
| Other FHE institutions | 3.2 | 2.6 | 1.8 | 2.7 | 2.3 | 1.8 | 3.0 | 2.5 | 1.8 |
| NVQ 2 and equivalents | 5.7 | 5.9 | 6.0 | 6.8 | 6.9 | 7.4 | 6.2 | 6.4 | 6.7 |
| All schools | 0.1 | 0.1 | 0.1 | 0.1 | 0.1 | 0.1 | 0.1 | 0.1 | 0.1 |
| Sixth form colleges | 0.1 | 0.1 | 0.1 | 0.2 | 0.2 | 0.2 | 0.1 | 0.1 | 0.1 |
| Other FHE institutions | 5.5 | 5.7 | 5.8 | 6.5 | 6.6 | 7.1 | 6.0 | 6.1 | 6.5 |
| Level 1 | 4.5 | 5.2 | 5.9 | 2.9 | 3.5 | 3.9 | 3.7 | 4.4 | 4.9 |
| Foundation GNVQ | 1.4 | 1.4 | 1.3 | 1.1 | 1.1 | 1.1 | 1.2 | 1.3 | 1.2 |
| All schools | 0.2 | 0.3 | 0.2 | 0.3 | 0.3 | 0.2 | 0.3 | 0.3 | 0.2 |
| Sixth form colleges | 0.1 | 0.1 | 0.1 | 0.1 | 0.1 | 0.1 | 0.1 | 0.1 | 0.1 |
| Other FHE institutions | 1.0 | 1.0 | 0.9 | 0.7 | 0.7 | 0.7 | 0.9 | 0.9 | 0.8 |
| NVQ 1 and equivalents | 3.2 | 3.8 | 4.6 | 1.8 | 2.4 | 2.8 | 2.5 | 3.1 | 3.7 |
| All schools | 0.1 | 0.1 | 0.1 | 0.1 | 0.0 | 0.0 | 0.1 | 0.1 | 0.0 |
| Sixth form colleges | 0.0 | 0.0 | 0.0 | 0.0 | 0.0 | 0.1 | 0.0 | 0.0 | 0.1 |
| Other FHE institutions | 3.1 | 3.7 | 4.5 | 1.7 | 2.3 | 2.7 | 2.4 | 3.0 | 3.6 |
| Other courses³ | 2.3 | 2.9 | 3.5 | 1.7 | 2.4 | 2.8 | 2.0 | 2.7 | 3.1 |
| All schools | 1.2 | 1.7 | 2.1 | 1.0 | 1.6 | 1.9 | 1.1 | 1.7 | 2.0 |
| Sixth form colleges | 0.0 | 0.0 | 0.0 | 0.0 | 0.0 | 0.0 | 0.0 | 0.0 | 0.0 |
| Other FHE institutions | 1.1 | 1.2 | 1.3 | 0.7 | 0.7 | 0.9 | 0.9 | 0.9 | 1.1 |
| Work Based Learning (WBL) | 8.5 | 8.0 | 8.3 | 5.9 | 5.7 | 5.8 | 7.3 | 6.9 | 7.1 |
| Advanced Apprenticeships (AAs) | 2.3 | 2.0 | 1.7 | 0.6 | 0.5 | 0.3 | 1.5 | 1.3 | 1.0 |
| Apprenticeships (As) | 3.5 | 3.6 | 3.7 | 3.5 | 3.6 | 3.6 | 3.5 | 3.6 | 3.7 |
| Entry to Employment (E2E) | 0.8 | 1.1 | 2.6 | 0.6 | 0.7 | 1.5 | 0.7 | 0.9 | 2.1 |
| NVQ Learning | 1.9 | 1.4 | 0.3 | 1.3 | 0.9 | 0.4 | 1.6 | 1.2 | 0.3 |
| Population aged 16 (thousands) | 326.3 | 324.5 | 331.5 | 307.2 | 307.0 | 314.3 | 633.5 | 631.6 | 645.8 |

1 Includes all pupils in maintained schools and maintained special schools.

2 Includes all pupils in independent schools, non-maintained special schools, city technology colleges and academies.

3 Includes all courses below level 1 and those of unknown or unspecified level (also includes PRUs; and special schools, for which no qualification breakdown is available prior to end 2003). Please see paragraphs 28-29 of the SFR for further information on changes to qualification data.

Table 4b: Participation of 17 year olds in full-time education by highest qualification aim and institution type, and work based learning, England, 2001 to 2003

| End of calendar year | percentage | | | | | | | | |
|--|--------------|--------------|---------------------|--------------|--------------|---------------------|--------------|--------------|---------------------|
| | Males | | | Females | | | All | | |
| | 2001 | 2002 | 2003 provisional | 2001 | 2002 | 2003 provisional | 2001 | 2002 | 2003 provisional |
| Full-time education | 54.6 | 54.4 | 55.5 | 62.1 | 62.9 | 63.8 | 58.2 | 58.5 | 59.5 |
| Higher Education (Level 4 and above) | 0.3 | 0.3 | 0.3 | 0.5 | 0.5 | 0.5 | 0.4 | 0.4 | 0.4 |
| Maintained schools ¹ | 0.0 | 0.0 | 0.0 | 0.0 | 0.0 | 0.0 | 0.0 | 0.0 | 0.0 |
| Independent schools ² | 0.0 | 0.0 | 0.0 | 0.1 | 0.1 | 0.1 | 0.0 | 0.0 | 0.0 |
| Sixth form colleges | 0.0 | 0.0 | 0.0 | 0.0 | 0.0 | 0.0 | 0.0 | 0.0 | 0.0 |
| General FE, tertiary and specialist colleges | 0.1 | 0.1 | 0.0 | 0.1 | 0.1 | 0.1 | 0.1 | 0.1 | 0.1 |
| Higher education institutions | 0.2 | 0.2 | 0.2 | 0.3 | 0.3 | 0.3 | 0.3 | 0.3 | 0.3 |
| Further Education | 54.3 | 54.1 | 55.2 | 61.6 | 62.4 | 63.4 | 57.8 | 58.1 | 59.2 |
| Maintained schools ¹ | 20.5 | 20.0 | 20.5 | 23.9 | 23.8 | 24.5 | 22.1 | 21.8 | 22.5 |
| Independent schools ² | 5.8 | 5.8 | 5.9 | 5.6 | 5.7 | 5.8 | 5.7 | 5.7 | 5.9 |
| Sixth form colleges | 6.9 | 7.2 | 7.4 | 8.6 | 9.0 | 9.1 | 7.8 | 8.1 | 8.2 |
| General FE, tertiary and specialist colleges | 18.6 | 18.9 | 19.4 | 20.1 | 20.3 | 20.2 | 19.3 | 19.6 | 19.8 |
| Higher education institutions | 0.2 | 0.2 | 0.2 | 0.3 | 0.3 | 0.3 | 0.3 | 0.2 | 0.2 |
| Level 3 | 44.5 | 43.9 | 44.6 | 53.9 | 53.9 | 54.6 | 49.1 | 48.7 | 49.5 |
| GCE A/AS level | 31.0 | 30.7 | 30.6 | 37.3 | 37.3 | 37.1 | 34.1 | 33.9 | 33.8 |
| All schools | 21.9 | 21.5 | 21.2 | 24.9 | 24.9 | 24.9 | 23.3 | 23.2 | 23.0 |
| Sixth form colleges | 5.3 | 5.5 | 5.7 | 6.8 | 7.0 | 7.0 | 6.0 | 6.2 | 6.3 |
| Other FHE institutions | 3.8 | 3.7 | 3.7 | 5.7 | 5.4 | 5.2 | 4.7 | 4.5 | 4.4 |
| VCE A/AS level or Advanced GNVQ | 8.2 | 7.2 | 7.2 | 9.1 | 8.4 | 8.4 | 8.6 | 7.8 | 7.8 |
| All schools | 3.0 | 2.8 | 3.5 | 3.3 | 3.1 | 4.0 | 3.2 | 3.0 | 3.7 |
| Sixth form colleges | 1.2 | 1.2 | 1.2 | 1.4 | 1.5 | 1.5 | 1.3 | 1.3 | 1.3 |
| Other FHE institutions | 4.0 | 3.3 | 2.5 | 4.4 | 3.8 | 3.0 | 4.2 | 3.5 | 2.7 |
| NVQ 3 and equivalents | 5.3 | 5.9 | 6.8 | 7.4 | 8.1 | 9.0 | 6.4 | 7.0 | 7.9 |
| All schools | 0.0 | 0.0 | 0.1 | 0.1 | 0.1 | 0.1 | 0.1 | 0.1 | 0.1 |
| Sixth form colleges | 0.1 | 0.2 | 0.2 | 0.3 | 0.3 | 0.3 | 0.2 | 0.2 | 0.2 |
| Other FHE institutions | 5.2 | 5.7 | 6.6 | 7.1 | 7.8 | 8.7 | 6.1 | 6.7 | 7.6 |
| Level 2 | 6.4 | 6.5 | 6.4 | 5.4 | 5.8 | 5.9 | 5.9 | 6.2 | 6.2 |
| GCSE | 0.6 | 0.6 | 0.6 | 0.5 | 0.5 | 0.5 | 0.5 | 0.6 | 0.5 |
| All schools | 0.2 | 0.1 | 0.1 | 0.1 | 0.1 | 0.1 | 0.1 | 0.1 | 0.1 |
| Sixth form colleges | 0.0 | 0.1 | 0.1 | 0.0 | 0.0 | 0.0 | 0.0 | 0.1 | 0.1 |
| Other FHE institutions | 0.4 | 0.4 | 0.4 | 0.3 | 0.4 | 0.4 | 0.3 | 0.4 | 0.4 |
| Intermediate GNVQ | 2.1 | 1.9 | 1.5 | 1.4 | 1.5 | 1.2 | 1.8 | 1.7 | 1.4 |
| All schools | 0.3 | 0.3 | 0.3 | 0.3 | 0.3 | 0.3 | 0.3 | 0.3 | 0.3 |
| Sixth form colleges | 0.2 | 0.2 | 0.2 | 0.1 | 0.1 | 0.1 | 0.2 | 0.2 | 0.2 |
| Other FHE institutions | 1.6 | 1.4 | 1.1 | 1.0 | 1.0 | 0.8 | 1.3 | 1.2 | 1.0 |
| NVQ 2 and equivalents | 3.7 | 4.1 | 4.3 | 3.5 | 3.8 | 4.2 | 3.6 | 4.0 | 4.3 |
| All schools | 0.0 | 0.0 | 0.0 | 0.1 | 0.1 | 0.0 | 0.0 | 0.0 | 0.0 |
| Sixth form colleges | 0.0 | 0.0 | 0.0 | 0.0 | 0.1 | 0.1 | 0.0 | 0.0 | 0.0 |
| Other FHE institutions | 3.6 | 4.0 | 4.3 | 3.4 | 3.7 | 4.1 | 3.5 | 3.9 | 4.2 |
| Level 1 | 1.6 | 1.9 | 2.1 | 1.0 | 1.2 | 1.2 | 1.3 | 1.5 | 1.7 |
| Foundation GNVQ | 0.4 | 0.5 | 0.4 | 0.3 | 0.4 | 0.3 | 0.4 | 0.4 | 0.4 |
| All schools | 0.1 | 0.1 | 0.0 | 0.1 | 0.1 | 0.0 | 0.1 | 0.1 | 0.0 |
| Sixth form colleges | 0.0 | 0.0 | 0.0 | 0.0 | 0.0 | 0.0 | 0.0 | 0.0 | 0.0 |
| Other FHE institutions | 0.3 | 0.4 | 0.3 | 0.2 | 0.2 | 0.3 | 0.3 | 0.3 | 0.3 |
| NVQ 1 and equivalents | 1.2 | 1.4 | 1.6 | 0.7 | 0.8 | 0.9 | 1.0 | 1.1 | 1.3 |
| All schools | 0.0 | 0.0 | 0.0 | 0.0 | 0.0 | 0.0 | 0.0 | 0.0 | 0.0 |
| Sixth form colleges | 0.0 | 0.0 | 0.0 | 0.0 | 0.0 | 0.0 | 0.0 | 0.0 | 0.0 |
| Other FHE institutions | 1.2 | 1.4 | 1.6 | 0.7 | 0.8 | 0.9 | 1.0 | 1.1 | 1.2 |
| Other courses³ | 1.7 | 1.8 | 2.1 | 1.3 | 1.5 | 1.6 | 1.5 | 1.6 | 1.9 |
| All schools | 0.8 | 0.9 | 1.1 | 0.7 | 0.9 | 1.0 | 0.8 | 0.9 | 1.1 |
| Sixth form colleges | 0.0 | 0.0 | 0.0 | 0.0 | 0.0 | 0.0 | 0.0 | 0.0 | 0.0 |
| Other FHE institutions | 0.8 | 0.8 | 0.9 | 0.5 | 0.6 | 0.6 | 0.7 | 0.7 | 0.8 |
| Work Based Learning (WBL) | 11.0 | 10.3 | 10.9 | 8.1 | 7.5 | 7.8 | 9.6 | 8.9 | 9.4 |
| Advanced Apprenticeships (AAs) | 4.0 | 3.5 | 3.0 | 1.7 | 1.2 | 0.8 | 2.9 | 2.4 | 1.9 |
| Apprenticeships (As) | 4.3 | 4.6 | 5.4 | 4.6 | 4.5 | 5.1 | 4.4 | 4.6 | 5.2 |
| Entry to Employment (E2E) | 0.5 | 0.6 | 1.9 | 0.4 | 0.5 | 1.2 | 0.5 | 0.6 | 1.5 |
| NVQ Learning | 2.1 | 1.6 | 0.6 | 1.5 | 1.2 | 0.8 | 1.8 | 1.4 | 0.7 |
| Population aged 17 (thousands) | 315.7 | 330.0 | 327.2 | 297.4 | 310.0 | 309.5 | 613.1 | 640.0 | 636.7 |

1 Includes all pupils in maintained schools and maintained special schools.

2 Includes all pupils in independent schools, non-maintained special schools, city technology colleges and academies.

3 Includes all courses below level 1 and those of unknown or unspecified level (also includes PRUs; and special schools, for which no qualification breakdown is available prior to end 2003). Please see paragraphs 28-29 of the SFR for further information on changes to qualification data.

Table 4c: Participation of 18 year olds⁴ in full-time education by highest qualification aim and institution type, and work based learning, England, 2001 to 2003

| End of calendar year | percentage | | | | | | | | |
|--|--------------|--------------|---------------------|--------------|--------------|---------------------|--------------|--------------|---------------------|
| | Males | | | Females | | | All | | |
| | 2001 | 2002 | 2003 provisional | 2001 | 2002 | 2003 provisional | 2001 | 2002 | 2003 provisional |
| Full-time education | 35.1 | 34.6 | 34.7 | 38.9 | 39.5 | 39.7 | 37.0 | 37.0 | 37.1 |
| Higher Education (Level 4 and above) | 18.7 | 18.2 | 18.0 | 23.2 | 23.3 | 23.1 | 20.9 | 20.7 | 20.5 |
| Maintained schools ¹ | 0.0 | 0.0 | 0.0 | 0.0 | 0.0 | 0.0 | 0.0 | 0.0 | 0.0 |
| Independent schools ² | 0.0 | 0.0 | 0.0 | 0.0 | 0.0 | 0.1 | 0.0 | 0.0 | 0.1 |
| Sixth form colleges | 0.0 | 0.0 | 0.0 | 0.0 | 0.0 | 0.0 | 0.0 | 0.0 | 0.0 |
| General FE, tertiary and specialist colleges | 0.8 | 0.6 | 0.6 | 0.8 | 0.6 | 0.6 | 0.8 | 0.6 | 0.6 |
| Higher education institutions | 17.8 | 17.6 | 17.4 | 22.3 | 22.6 | 22.3 | 20.0 | 20.0 | 19.8 |
| Further Education | 16.5 | 16.5 | 16.7 | 15.7 | 16.2 | 16.6 | 16.1 | 16.3 | 16.6 |
| Maintained schools ¹ | 2.1 | 2.3 | 2.2 | 1.8 | 1.9 | 2.0 | 1.9 | 2.1 | 2.1 |
| Independent schools ² | 1.0 | 1.0 | 1.0 | 0.8 | 0.8 | 0.8 | 0.9 | 0.9 | 0.9 |
| Sixth form colleges | 1.3 | 1.4 | 1.4 | 1.1 | 1.2 | 1.3 | 1.2 | 1.3 | 1.4 |
| General FE, tertiary and specialist colleges | 10.3 | 10.3 | 10.6 | 9.5 | 9.7 | 10.0 | 9.9 | 10.0 | 10.3 |
| Higher education institutions | 0.5 | 0.5 | 0.4 | 1.0 | 1.0 | 1.0 | 0.8 | 0.7 | 0.7 |
| Level 3 | 12.0 | 11.9 | 11.8 | 12.3 | 12.5 | 12.9 | 12.1 | 12.2 | 12.3 |
| GCE A/AS level | 4.0 | 4.3 | 4.1 | 3.9 | 4.1 | 4.1 | 4.0 | 4.2 | 4.1 |
| All schools | 1.7 | 1.9 | 1.8 | 1.5 | 1.6 | 1.6 | 1.6 | 1.8 | 1.7 |
| Sixth form colleges | 0.7 | 0.8 | 0.8 | 0.6 | 0.6 | 0.7 | 0.6 | 0.7 | 0.7 |
| Other FHE institutions | 1.6 | 1.6 | 1.5 | 1.9 | 1.8 | 1.8 | 1.7 | 1.7 | 1.7 |
| VCE A/AS level or Advanced GNVQ | 3.7 | 3.3 | 2.8 | 2.9 | 2.7 | 2.5 | 3.3 | 3.0 | 2.7 |
| All schools | 0.6 | 0.6 | 0.7 | 0.6 | 0.5 | 0.6 | 0.6 | 0.6 | 0.6 |
| Sixth form colleges | 0.5 | 0.5 | 0.4 | 0.4 | 0.4 | 0.4 | 0.4 | 0.4 | 0.4 |
| Other FHE institutions | 2.5 | 2.2 | 1.7 | 1.9 | 1.8 | 1.5 | 2.2 | 2.0 | 1.6 |
| NVQ 3 and equivalents | 4.3 | 4.3 | 4.9 | 5.5 | 5.7 | 6.3 | 4.9 | 5.0 | 5.6 |
| All schools | 0.0 | 0.0 | 0.0 | 0.0 | 0.0 | 0.0 | 0.0 | 0.0 | 0.0 |
| Sixth form colleges | 0.1 | 0.1 | 0.1 | 0.1 | 0.1 | 0.1 | 0.1 | 0.1 | 0.1 |
| Other FHE institutions | 4.2 | 4.3 | 4.8 | 5.4 | 5.6 | 6.1 | 4.8 | 4.9 | 5.4 |
| Level 2 | 2.5 | 2.5 | 2.6 | 2.0 | 2.1 | 2.2 | 2.3 | 2.3 | 2.4 |
| GCSE | 0.2 | 0.2 | 0.2 | 0.2 | 0.2 | 0.2 | 0.2 | 0.2 | 0.2 |
| All schools | 0.0 | 0.0 | 0.0 | 0.0 | 0.0 | 0.0 | 0.0 | 0.0 | 0.0 |
| Sixth form colleges | 0.0 | 0.0 | 0.0 | 0.0 | 0.0 | 0.0 | 0.0 | 0.0 | 0.0 |
| Other FHE institutions | 0.1 | 0.1 | 0.1 | 0.1 | 0.2 | 0.2 | 0.1 | 0.2 | 0.1 |
| Intermediate GNVQ | 0.6 | 0.6 | 0.5 | 0.4 | 0.4 | 0.4 | 0.5 | 0.5 | 0.4 |
| All schools | 0.0 | 0.0 | 0.0 | 0.0 | 0.0 | 0.0 | 0.0 | 0.0 | 0.0 |
| Sixth form colleges | 0.0 | 0.0 | 0.0 | 0.0 | 0.0 | 0.0 | 0.0 | 0.0 | 0.0 |
| Other FHE institutions | 0.6 | 0.5 | 0.4 | 0.3 | 0.3 | 0.3 | 0.5 | 0.4 | 0.4 |
| NVQ 2 and equivalents | 1.7 | 1.7 | 1.9 | 1.4 | 1.5 | 1.6 | 1.6 | 1.6 | 1.7 |
| All schools | 0.0 | 0.0 | 0.0 | 0.0 | 0.0 | 0.0 | 0.0 | 0.0 | 0.0 |
| Sixth form colleges | 0.0 | 0.0 | 0.0 | 0.0 | 0.0 | 0.0 | 0.0 | 0.0 | 0.0 |
| Other FHE institutions | 1.7 | 1.7 | 1.8 | 1.4 | 1.4 | 1.6 | 1.6 | 1.5 | 1.7 |
| Level 1 | 0.7 | 0.9 | 0.9 | 0.5 | 0.6 | 0.6 | 0.6 | 0.7 | 0.8 |
| Foundation GNVQ | 0.1 | 0.2 | 0.2 | 0.1 | 0.1 | 0.1 | 0.1 | 0.2 | 0.2 |
| All schools | 0.0 | 0.0 | 0.0 | 0.0 | 0.0 | 0.0 | 0.0 | 0.0 | 0.0 |
| Sixth form colleges | 0.0 | 0.0 | 0.0 | 0.0 | 0.0 | 0.0 | 0.0 | 0.0 | 0.0 |
| Other FHE institutions | 0.1 | 0.1 | 0.1 | 0.1 | 0.1 | 0.1 | 0.1 | 0.1 | 0.1 |
| NVQ 1 and equivalents | 0.6 | 0.7 | 0.8 | 0.4 | 0.5 | 0.5 | 0.5 | 0.6 | 0.6 |
| All schools | 0.0 | 0.0 | 0.0 | 0.0 | 0.0 | 0.0 | 0.0 | 0.0 | 0.0 |
| Sixth form colleges | 0.0 | 0.0 | 0.0 | 0.0 | 0.0 | 0.0 | 0.0 | 0.0 | 0.0 |
| Other FHE institutions | 0.6 | 0.7 | 0.8 | 0.4 | 0.5 | 0.5 | 0.5 | 0.6 | 0.6 |
| Other courses³ | 1.2 | 1.2 | 1.4 | 0.9 | 0.9 | 1.0 | 1.0 | 1.0 | 1.2 |
| All schools | 0.6 | 0.5 | 0.6 | 0.4 | 0.4 | 0.4 | 0.5 | 0.5 | 0.5 |
| Sixth form colleges | 0.0 | 0.0 | 0.0 | 0.0 | 0.0 | 0.0 | 0.0 | 0.0 | 0.0 |
| Other FHE institutions | 0.6 | 0.6 | 0.7 | 0.4 | 0.5 | 0.5 | 0.5 | 0.6 | 0.6 |
| Work Based Learning (WBL) | 10.2 | 9.5 | 10.0 | 6.9 | 6.6 | 6.7 | 8.6 | 8.1 | 8.4 |
| Advanced Apprenticeships (AAs) | 5.6 | 4.8 | 4.2 | 2.5 | 2.1 | 1.5 | 4.1 | 3.5 | 2.9 |
| Apprenticeships (As) | 3.1 | 3.5 | 4.5 | 3.3 | 3.5 | 4.0 | 3.2 | 3.5 | 4.3 |
| Entry to Employment (E2E) | 0.1 | 0.1 | 0.6 | 0.1 | 0.1 | 0.4 | 0.1 | 0.1 | 0.5 |
| NVQ Learning | 1.4 | 1.1 | 0.7 | 1.0 | 0.9 | 0.8 | 1.2 | 1.0 | 0.7 |
| Population aged 18 (thousands) | 308.5 | 320.3 | 333.4 | 293.5 | 301.0 | 313.4 | 602.0 | 621.3 | 646.7 |

1 Includes all pupils in maintained schools and maintained special schools.

2 Includes all pupils in independent schools, non-maintained special schools, city technology colleges and academies.

3 Includes all courses below level 1 and those of unknown or unspecified level (also includes PRUs; and special schools, for which no qualification breakdown is available prior to end 2003). Please see paragraphs 28-29 of the SFR for further information on changes to qualification data.

4 Participation estimates for 18 year olds may be slightly underestimated between 2001 and 2002. See paragraphs 9-11 for further information

Table 4d: Participation of 16-18 year olds in full-time education by highest qualification aim and institution type, and work based learning, England, 2001 to 2003

| End of calendar year | percentage | | | | | | | | |
|--|--------------|--------------|---------------------|--------------|--------------|---------------------|----------------|----------------|---------------------|
| | Males | | | Females | | | All | | |
| | 2001 | 2002 | 2003 provisional | 2001 | 2002 | 2003 provisional | 2001 | 2002 | 2003 provisional |
| Full-time education | 52.4 | 52.4 | 52.4 | 58.9 | 59.6 | 60.0 | 55.6 | 55.9 | 56.1 |
| Higher Education (Level 4 and above) | 6.2 | 6.1 | 6.1 | 7.8 | 7.9 | 7.9 | 7.0 | 7.0 | 7.0 |
| Maintained schools ¹ | 0.0 | 0.0 | 0.0 | 0.0 | 0.0 | 0.0 | 0.0 | 0.0 | 0.0 |
| Independent schools ² | 0.0 | 0.0 | 0.0 | 0.1 | 0.1 | 0.1 | 0.0 | 0.0 | 0.0 |
| Sixth form colleges | 0.0 | 0.0 | 0.0 | 0.0 | 0.0 | 0.0 | 0.0 | 0.0 | 0.0 |
| General FE, tertiary and specialist colleges | 0.3 | 0.2 | 0.2 | 0.3 | 0.3 | 0.3 | 0.3 | 0.2 | 0.2 |
| Higher education institutions | 5.9 | 5.9 | 5.9 | 7.4 | 7.5 | 7.6 | 6.6 | 6.7 | 6.7 |
| Further Education | 46.2 | 46.3 | 46.3 | 51.1 | 51.7 | 52.1 | 48.6 | 48.9 | 49.1 |
| Maintained schools ¹ | 16.5 | 16.5 | 16.4 | 18.8 | 19.0 | 19.2 | 17.6 | 17.7 | 17.8 |
| Independent schools ² | 4.4 | 4.4 | 4.3 | 4.2 | 4.3 | 4.2 | 4.3 | 4.3 | 4.3 |
| Sixth form colleges | 5.7 | 5.9 | 5.9 | 6.8 | 7.1 | 7.1 | 6.3 | 6.4 | 6.5 |
| General FE, tertiary and specialist colleges | 17.2 | 17.3 | 17.5 | 17.9 | 18.0 | 17.9 | 17.6 | 17.7 | 17.7 |
| Higher education institutions | 0.3 | 0.3 | 0.3 | 0.5 | 0.5 | 0.5 | 0.4 | 0.4 | 0.4 |
| Level 3 | 34.0 | 33.9 | 33.7 | 40.8 | 41.0 | 41.1 | 37.3 | 37.3 | 37.3 |
| GCE A/AS level | 23.3 | 23.4 | 22.6 | 27.9 | 28.0 | 27.4 | 25.6 | 25.6 | 24.9 |
| All schools | 16.1 | 16.2 | 15.5 | 18.3 | 18.5 | 18.0 | 17.2 | 17.3 | 16.7 |
| Sixth form colleges | 4.1 | 4.2 | 4.2 | 5.1 | 5.2 | 5.2 | 4.5 | 4.7 | 4.7 |
| Other FHE institutions | 3.1 | 3.0 | 2.9 | 4.5 | 4.3 | 4.2 | 3.8 | 3.7 | 3.5 |
| VCE A/AS level or Advanced GNVQ | 6.1 | 5.6 | 5.5 | 6.8 | 6.3 | 6.5 | 6.5 | 5.9 | 6.0 |
| All schools | 2.3 | 2.2 | 2.8 | 2.5 | 2.4 | 3.1 | 2.4 | 2.3 | 3.0 |
| Sixth form colleges | 0.9 | 0.9 | 0.9 | 1.1 | 1.1 | 1.1 | 1.0 | 1.0 | 1.0 |
| Other FHE institutions | 3.0 | 2.5 | 1.9 | 3.2 | 2.8 | 2.2 | 3.1 | 2.6 | 2.0 |
| NVQ 3 and equivalents | 4.6 | 4.9 | 5.6 | 6.1 | 6.6 | 7.3 | 5.3 | 5.8 | 6.4 |
| All schools | 0.0 | 0.0 | 0.1 | 0.1 | 0.1 | 0.1 | 0.1 | 0.0 | 0.1 |
| Sixth form colleges | 0.1 | 0.2 | 0.2 | 0.2 | 0.2 | 0.2 | 0.2 | 0.2 | 0.2 |
| Other FHE institutions | 4.4 | 4.7 | 5.3 | 5.8 | 6.4 | 7.0 | 5.1 | 5.5 | 6.1 |
| Level 2 | 8.1 | 7.7 | 7.3 | 7.6 | 7.4 | 7.3 | 7.8 | 7.6 | 7.3 |
| GCSE | 1.2 | 1.0 | 1.0 | 1.0 | 0.9 | 0.9 | 1.1 | 1.0 | 0.9 |
| All schools | 0.5 | 0.4 | 0.3 | 0.4 | 0.3 | 0.3 | 0.5 | 0.3 | 0.3 |
| Sixth form colleges | 0.1 | 0.1 | 0.1 | 0.1 | 0.1 | 0.1 | 0.1 | 0.1 | 0.1 |
| Other FHE institutions | 0.5 | 0.5 | 0.5 | 0.5 | 0.5 | 0.5 | 0.5 | 0.5 | 0.5 |
| Intermediate GNVQ | 3.2 | 2.8 | 2.2 | 2.6 | 2.4 | 2.0 | 2.9 | 2.6 | 2.1 |
| All schools | 1.0 | 0.9 | 0.7 | 0.9 | 0.8 | 0.7 | 0.9 | 0.9 | 0.7 |
| Sixth form colleges | 0.4 | 0.4 | 0.4 | 0.3 | 0.3 | 0.3 | 0.3 | 0.3 | 0.3 |
| Other FHE institutions | 1.8 | 1.5 | 1.1 | 1.4 | 1.2 | 1.0 | 1.6 | 1.4 | 1.0 |
| NVQ 2 and equivalents | 3.7 | 3.9 | 4.1 | 4.0 | 4.1 | 4.4 | 3.8 | 4.0 | 4.2 |
| All schools | 0.0 | 0.0 | 0.0 | 0.1 | 0.1 | 0.1 | 0.0 | 0.1 | 0.1 |
| Sixth form colleges | 0.0 | 0.0 | 0.1 | 0.1 | 0.1 | 0.1 | 0.1 | 0.1 | 0.1 |
| Other FHE institutions | 3.7 | 3.8 | 4.0 | 3.8 | 3.9 | 4.3 | 3.7 | 3.9 | 4.1 |
| Level 1 | 2.3 | 2.7 | 3.0 | 1.5 | 1.8 | 1.9 | 1.9 | 2.2 | 2.4 |
| Foundation GNVQ | 0.7 | 0.7 | 0.6 | 0.5 | 0.5 | 0.5 | 0.6 | 0.6 | 0.6 |
| All schools | 0.1 | 0.1 | 0.1 | 0.1 | 0.1 | 0.1 | 0.1 | 0.1 | 0.1 |
| Sixth form colleges | 0.0 | 0.0 | 0.1 | 0.0 | 0.0 | 0.0 | 0.0 | 0.0 | 0.0 |
| Other FHE institutions | 0.5 | 0.5 | 0.5 | 0.4 | 0.4 | 0.4 | 0.4 | 0.4 | 0.4 |
| NVQ 1 and equivalents | 1.7 | 2.0 | 2.3 | 1.0 | 1.2 | 1.4 | 1.3 | 1.6 | 1.9 |
| All schools | 0.0 | 0.0 | 0.0 | 0.0 | 0.0 | 0.0 | 0.0 | 0.0 | 0.0 |
| Sixth form colleges | 0.0 | 0.0 | 0.0 | 0.0 | 0.0 | 0.0 | 0.0 | 0.0 | 0.0 |
| Other FHE institutions | 1.6 | 1.9 | 2.3 | 0.9 | 1.2 | 1.3 | 1.3 | 1.6 | 1.8 |
| Other courses³ | 1.8 | 2.0 | 2.3 | 1.3 | 1.6 | 1.8 | 1.5 | 1.8 | 2.1 |
| All schools | 0.9 | 1.1 | 1.3 | 0.7 | 1.0 | 1.1 | 0.8 | 1.0 | 1.2 |
| Sixth form colleges | 0.0 | 0.0 | 0.0 | 0.0 | 0.0 | 0.0 | 0.0 | 0.0 | 0.0 |
| Other FHE institutions | 0.9 | 0.9 | 1.0 | 0.6 | 0.6 | 0.7 | 0.7 | 0.7 | 0.8 |
| Work Based Learning (WBL) | 9.9 | 9.3 | 9.7 | 7.0 | 6.6 | 6.8 | 8.5 | 8.0 | 8.3 |
| Advanced Apprenticeships (AAs) | 3.9 | 3.4 | 2.9 | 1.6 | 1.3 | 0.9 | 2.8 | 2.4 | 1.9 |
| Apprenticeships (As) | 3.6 | 3.9 | 4.5 | 3.8 | 3.9 | 4.2 | 3.7 | 3.9 | 4.4 |
| Entry to Employment (E2E) | 0.5 | 0.6 | 1.7 | 0.3 | 0.4 | 1.0 | 0.4 | 0.5 | 1.4 |
| NVQ Learning | 1.8 | 1.4 | 0.6 | 1.2 | 1.0 | 0.6 | 1.5 | 1.2 | 0.6 |
| Population aged 16-18 (thousands) | 950.4 | 974.9 | 992.0 | 898.1 | 918.0 | 937.1 | 1,848.5 | 1,892.9 | 1,929.2 |

1 Includes all pupils in maintained schools and maintained special schools.

2 Includes all pupils in independent schools, non-maintained special schools, city technology colleges and academies.

3 Includes all courses below level 1 and those of unknown or unspecified level (also includes PRUs; and special schools, for which no qualification breakdown is available prior to end 2003). Please see paragraphs 28-29 of the SFR for further information on changes to qualification data.

Table 5: Participation of 16-18 year olds in education and training, England, 1994 onwards^{1 2}

| End of calendar year | 1994 | 1995 | 1996 | 1997 | 1998 | 1999 | 2000 | 2001 | percentage | |
|---|---------------|---------------|---------------|---------------|---------------|---------------|---------------|---------------|---------------|---------------------|
| | | | | | | | | | 2002 | 2003 provisional |
| Males and females | | | | | | | | | | |
| Aged 16 | | | | | | | | | | |
| Education and training | | | | | | | | | | |
| Full-time education | 71.7 | 71.0 | 70.6 | 70.2 | 70.2 | 71.8 | 71.0 | 70.7 | 71.8 | 71.8 |
| Work Based Learning (WBL) | 12.6 | 10.9 | 9.8 | 9.5 | 8.9 | 8.2 | 8.3 | 7.3 | 6.9 | 7.1 |
| Employer Funded Training (EFT) | 3.1 | 3.3 | 3.3 | 3.5 | 3.7 | 3.4 | 2.9 | 3.1 | 3.1 | 3.3 |
| Other education and training (OET) ³ | 4.4 | 3.9 | 4.4 | 4.3 | 4.1 | 3.9 | 4.5 | 4.8 | 4.4 | 4.5 |
| Total Education and training⁴ | 90.6 | 88.3 | 87.5 | 87.0 | 86.4 | 87.1 | 86.4 | 85.6 | 86.0 | 86.5 |
| Not in any education or training ⁵ | 9.4 | 11.7 | 12.5 | 13.0 | 13.6 | 12.9 | 13.6 | 14.4 | 14.0 | 13.5 |
| Population (thousands) | 545.8 | 595.0 | 613.6 | 605.9 | 594.5 | 598.8 | 606.7 | 633.5 | 631.6 | 645.8 |
| Aged 17 | | | | | | | | | | |
| Education and training | | | | | | | | | | |
| Full-time education | 59.5 | 59.3 | 59.1 | 58.4 | 58.3 | 59.4 | 59.7 | 58.2 | 58.5 | 59.5 |
| Work Based Learning (WBL) | 13.6 | 12.4 | 11.9 | 11.3 | 11.2 | 11.0 | 10.8 | 9.6 | 8.9 | 9.4 |
| Employer Funded Training (EFT) | 5.0 | 4.9 | 5.5 | 5.7 | 6.0 | 5.8 | 4.7 | 4.8 | 5.1 | 5.1 |
| Other education and training (OET) ³ | 5.0 | 4.5 | 4.8 | 5.2 | 4.9 | 4.7 | 5.3 | 5.6 | 5.4 | 5.5 |
| Total Education and training⁴ | 82.0 | 80.3 | 80.7 | 80.1 | 80.0 | 80.7 | 80.2 | 78.1 | 77.7 | 79.3 |
| Not in any education or training ⁵ | 18.0 | 19.7 | 19.3 | 19.9 | 20.0 | 19.3 | 19.8 | 21.9 | 22.3 | 20.7 |
| Population (thousands) | 530.3 | 544.3 | 593.1 | 611.4 | 603.7 | 590.1 | 598.1 | 613.1 | 640.0 | 636.7 |
| Aged 18 | | | | | | | | | | |
| Education and training | | | | | | | | | | |
| Full-time education | 39.1 | 40.0 | 40.0 | 38.7 | 37.9 | 38.0 | 38.0 | 37.0 | 37.0 | 37.1 |
| Work Based Learning (WBL) | 7.8 | 7.8 | 8.7 | 8.6 | 8.6 | 9.0 | 9.0 | 8.6 | 8.1 | 8.4 |
| Employer Funded Training (EFT) | 8.1 | 7.4 | 7.4 | 7.8 | 7.7 | 7.9 | 7.3 | 7.6 | 7.8 | 7.9 |
| Other education and training (OET) ³ | 6.0 | 5.9 | 6.5 | 6.9 | 7.0 | 6.6 | 7.1 | 7.0 | 6.6 | 6.3 |
| Total Education and training⁴ | 60.6 | 60.7 | 62.1 | 61.6 | 61.0 | 61.3 | 61.2 | 60.1 | 59.4 | 59.6 |
| Not in any education or training ⁵ | 39.4 | 39.3 | 37.9 | 38.4 | 39.0 | 38.7 | 38.8 | 39.9 | 40.6 | 40.4 |
| Population (thousands) | 548.5 | 529.0 | 542.0 | 589.1 | 605.9 | 597.5 | 585.5 | 602.0 | 621.3 | 646.7 |
| Aged 16-18 | | | | | | | | | | |
| Education and training | | | | | | | | | | |
| Full-time education | 56.7 | 57.4 | 57.2 | 55.9 | 55.4 | 56.4 | 56.4 | 55.6 | 55.9 | 56.1 |
| Work Based Learning (WBL) | 11.3 | 10.4 | 10.2 | 9.8 | 9.6 | 9.4 | 9.3 | 8.5 | 8.0 | 8.3 |
| Employer Funded Training (EFT) | 5.4 | 5.1 | 5.3 | 5.7 | 5.8 | 5.7 | 4.9 | 5.1 | 5.3 | 5.4 |
| Other education and training (OET) ³ | 5.1 | 4.7 | 5.2 | 5.5 | 5.3 | 5.1 | 5.6 | 5.8 | 5.5 | 5.4 |
| Total Education and training⁴ | 77.7 | 77.0 | 77.3 | 76.4 | 75.7 | 76.4 | 76.1 | 74.8 | 74.4 | 75.1 |
| Not in any education or training ⁵ | 22.3 | 23.0 | 22.7 | 23.6 | 24.3 | 23.6 | 23.9 | 25.2 | 25.6 | 24.9 |
| Population (thousands) | 1624.5 | 1668.4 | 1748.7 | 1806.3 | 1804.2 | 1786.4 | 1790.3 | 1848.5 | 1892.9 | 1929.2 |

1 Time series back to 1985 are available online at www.dfes.gov.uk/rsgateway

2 Participation estimates may be slightly underestimated for 16 year olds between 1999 and 2000; 17 year olds between 2000 and 2001; and 18 year olds 2001 and 2002. See paragraphs 9-11 for further information.

3 Includes part-time education not funded by employers or through WBL; also full- or part-time education in independent FE and HE institutions.

4 Total of all full-time education and WBL (less WBL in full-time education) plus EFT and OET

5 The remainder of the age group.

Figure 1: Participation of 16-18 year olds in education and training by labour market status, England, 2003

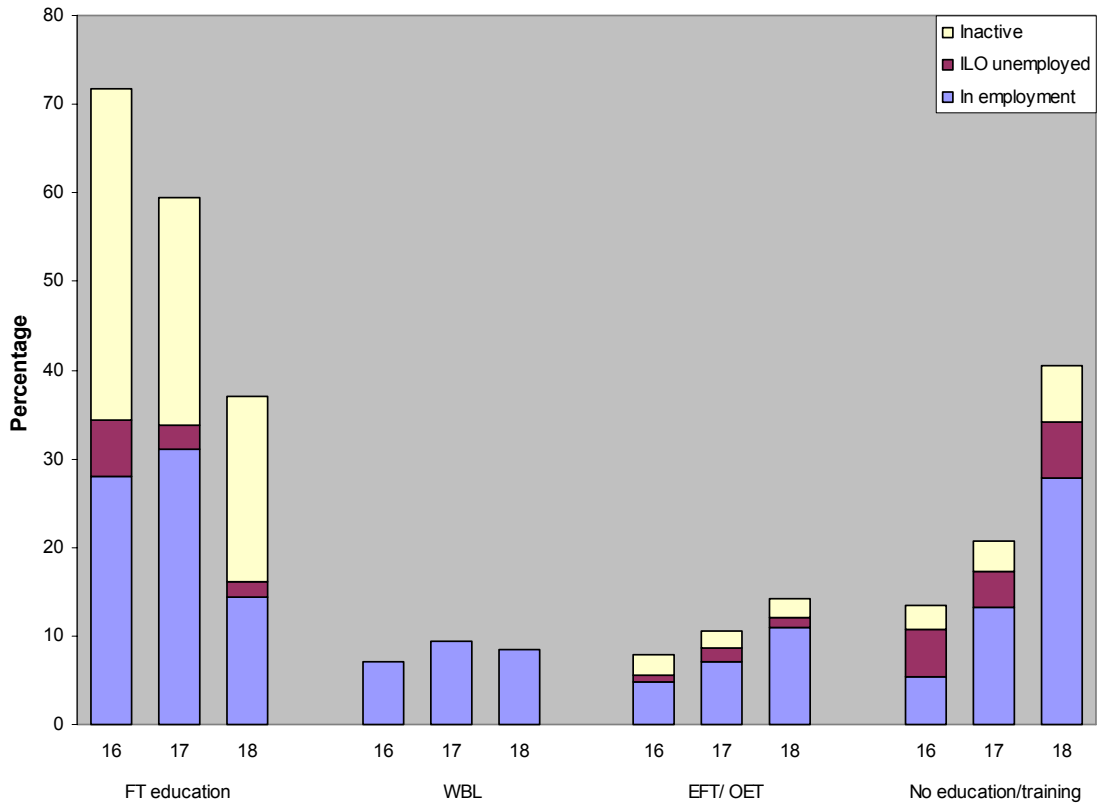


Figure 2: Participation of 16-18 year olds in full-time education by institution type and qualification aim, England, 2003

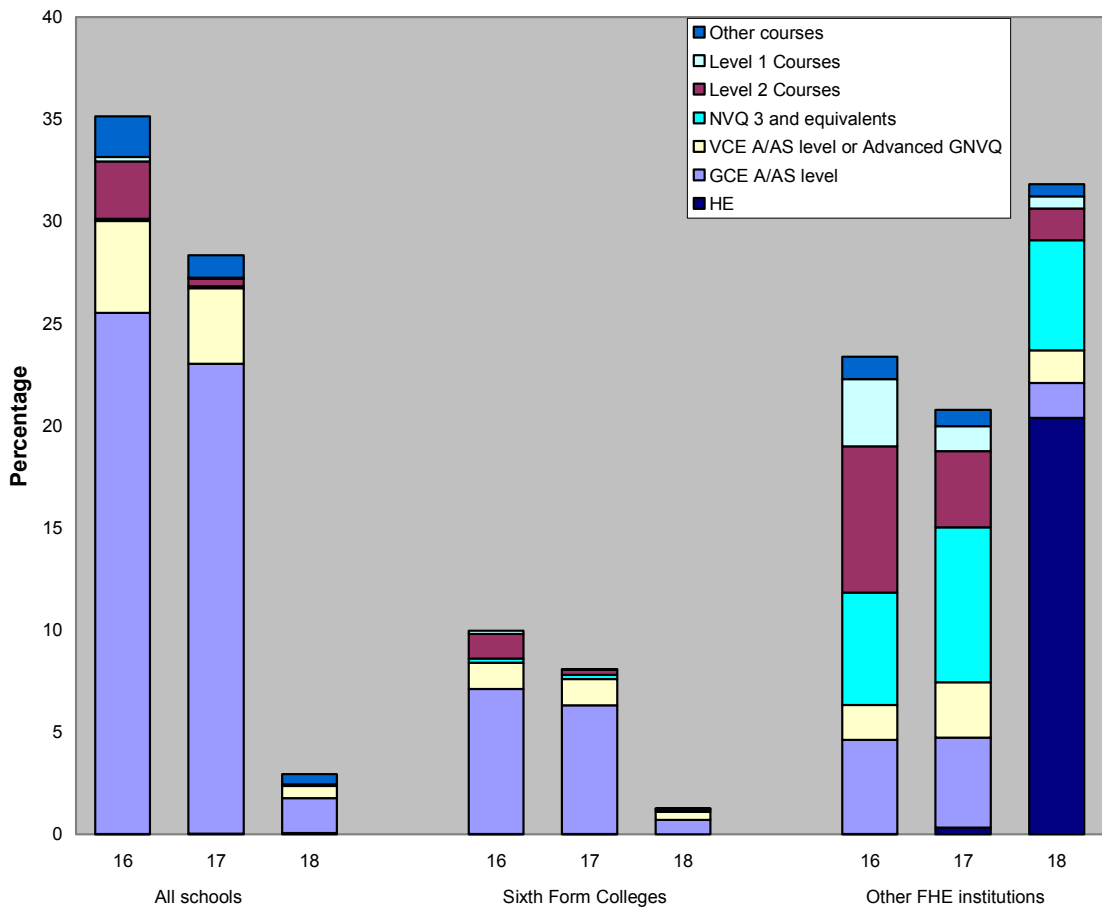


Figure 3: Participation of 16 year olds in education and training, England, 1994 to 2003

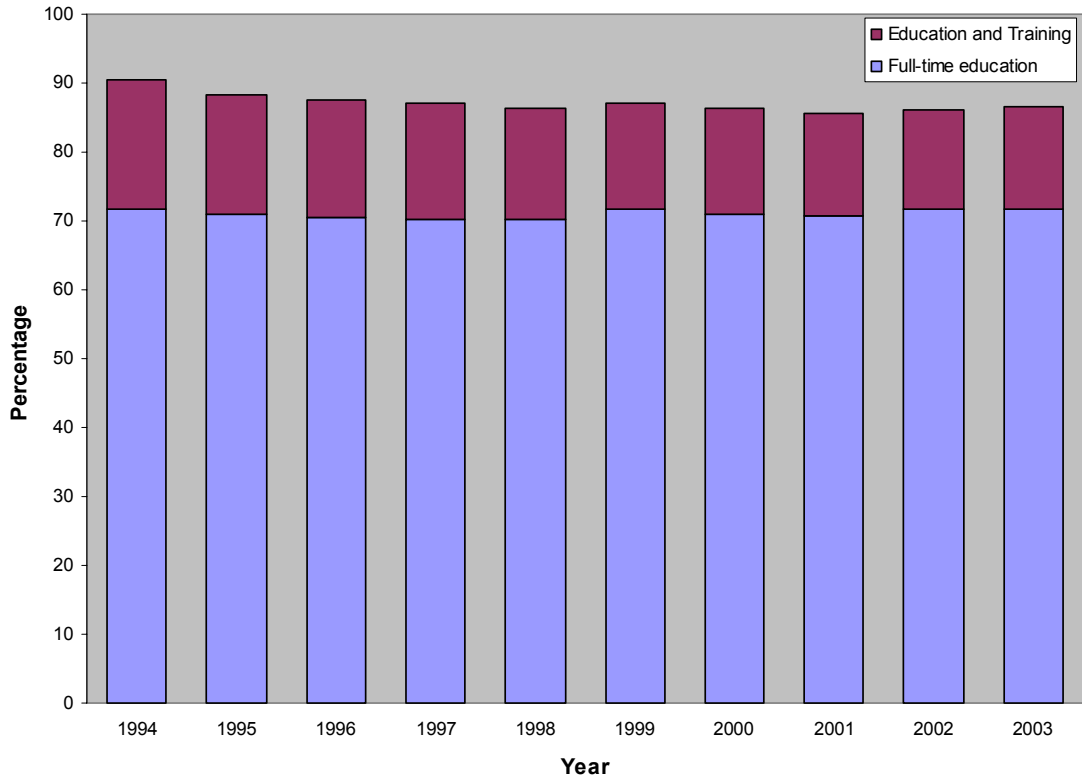


Figure 4: Participation of 16-18 year olds in education and training, England, 1994 to 2003

