

ANNEX 1: CLASS SIZES

INTRODUCTION

This Annex to Statistical First Release (SFR) 08/2009 *Schools, Pupils and Their Characteristics: January 2009 (Provisional)* provides commentary on class size information for maintained primary and state funded secondary schools. Figures presented in this commentary are based upon provisional information collected in the School Census in January 2009.

Key Stage 1 Classes (including Reception) in Maintained Primary Schools (Tables 9a and 9b)

- The average size of Key Stage 1 classes taught by one teacher on the census day was 26.2, a small increase compared to 25.7 in January 2008.
- The proportion of Key Stage 1 classes reported as having more than 30 pupils on the census day was 1.7 per cent, up from 1.5 per cent in January 2008. The number of Key Stage 1 classes reported as having more than 30 pupils on the census day was 930 (from a total of 53,410 classes), up from 790 (from a total of 53,160 classes) in January 2008.
- The number of Key Stage 1 classes reported as unlawfully having more than 30 pupils on the census day was 310; this represents 0.6 per cent of all Key Stage 1 classes. This is up from January 2008 where 0.4 per cent of Key Stage 1 classes had more than 30 pupils on the census day.
- The proportion of Key Stage 1 classes reported as having more than 30 pupils, but which met legal requirements (which allow infant classes of more than 30 in very limited circumstances) on the census day is 1.1 per cent (580 out of 53,410 classes), the same as in January 2008 (570 classes out of 53,160 classes). The most common reason for a Key Stage 1 class meeting legal requirements for having over 30 pupils was pupils admitted on the basis of an independent appeal panel's decision or admitted having initially been refused entry as a result of an error. This accounted for 53.2 per cent of lawful classes with over 30 pupils. Pupils admitted outside the normal admission round were the second most common reason, accounting for 21.6 per cent of lawful classes with over 30 pupils.

Key Stage 2 Classes in Maintained Primary Schools (Table 9a)

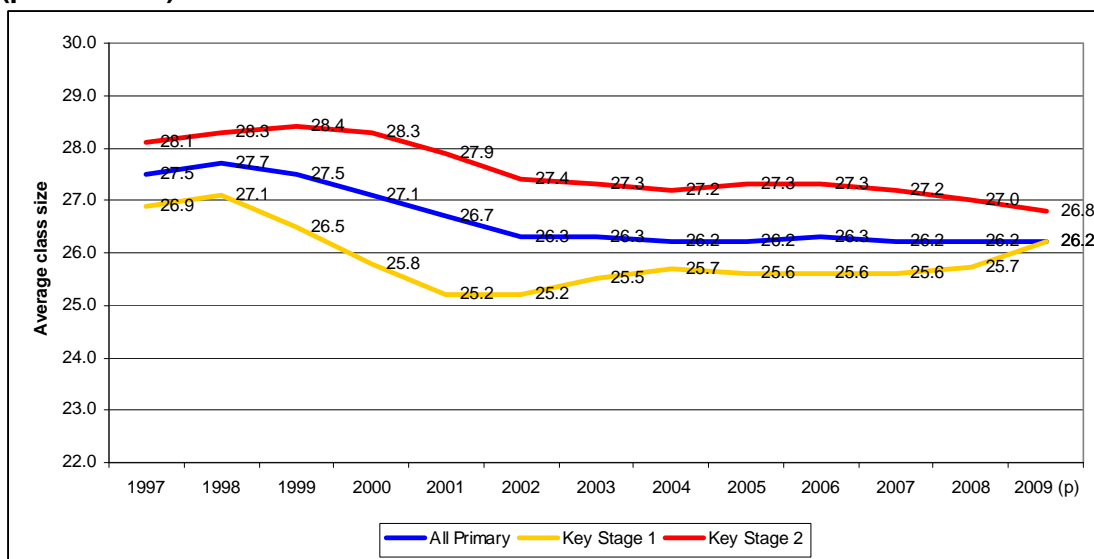
- The average size of Key Stage 2 classes taught by one teacher on the census day was 26.8 in January 2009, a decrease from 27.0 in January 2008.
- The proportion of Key Stage 2 classes reported as having more than 30 pupils on the census day was 15.8 per cent, down from 17.6 per cent in January 2008.

Overall Primary (Table 10)

- In January 2009, the average size of classes taught by one teacher in primary schools was 26.2, the same as in January 2008. Figure 1 shows the trend in average class size for primary schools since 1997. The figure shows a downward trend in primary school class sizes between 1998 and 2002, remaining relatively

stable in subsequent years.

Figure 1: Average class size for primary schools 1997 to 2009 (provisional):



- In January 2009 some 9.9 per cent of classes in primary schools contained more than 30 pupils, down from 10.8 per cent in January 2008, and 12.2 per cent in January 2006.

Classes in State Funded Secondary Schools (Table 10)

- The average size of classes taught by one teacher in secondary schools was 20.6 in 2009, down from 20.9 in 2008.
- In January 2009 some 6.6 per cent of classes in state funded secondary schools contained more than 30 pupils, a decrease from 6.7 per cent in January 2008.