

Experimental Statistical Release

25 November 2009

Coverage: England

Theme: Children,
Education and Skills

Issued by

Department for Children,
Schools and Families
Sanctuary Buildings
Great Smith Street
London SW1P 3BT

Telephone:

Press Office

020 7925 6789

Public Enquiries

0870 000 2288

Statistician

Jessica Miller

Email

info@dcsf.gov.uk

Internet

[http://www.dcsf.gov.uk/
rsgateway/DB/STR/
index.sht](http://www.dcsf.gov.uk/rsgateway/DB/STR/index.sht)

Bridging Series for Outcomes for Looked After Children: Comparison of Data from Matched Administrative Source with Current Aggregate Source

1. Introduction

This is a new Statistical Release which contains a comparison of figures on outcomes for looked after children, currently collected via the OC2 data collection with figures derived from a matched administrative data source taken from the National Pupil Database and the Children Looked After database.

This publication includes previously published figures based on the OC2 data and figures based on the new matched administrative data source. For 2009, the OC2 data will still be used as the main source for the attainment of looked after children and these figures will be published in April 2010 in the usual Statistical First Release. However, 2009 will be the last year of the OC2 collection and from 2010 onwards, the matched administrative data will be used to measure the attainment of looked after children.

2. Experimental Statistics

These statistics are published as 'Experimental Statistics' which reflects the fact that we are working with a new data source and using a new methodology. These figures should be treated with caution as this is the first year for which such data have been published.

We would welcome comments and feedback on the methodology and results. Please contact Jessica.Miller@dcsf.gsi.gov.uk

3. Methodology Summary

Full details of the methodology are presented on the Research and Statistics Gateway, alongside this release. The new matched administrative data source is produced by matching the individual level information about looked after children which is collected annually from Local Authorities via the SSSDA903 return to the National Pupil Database which contains attainment data from awarding bodies and characteristics information from the School Census. The matching is carried out using Unique Pupil Number (UPN) and we have seen improvements over time in the volumes of UPNs received. However we continue to emphasise the importance of submitting valid UPNs to improve the matching rate and therefore achieve accurate reporting of the attainment of looked after children.

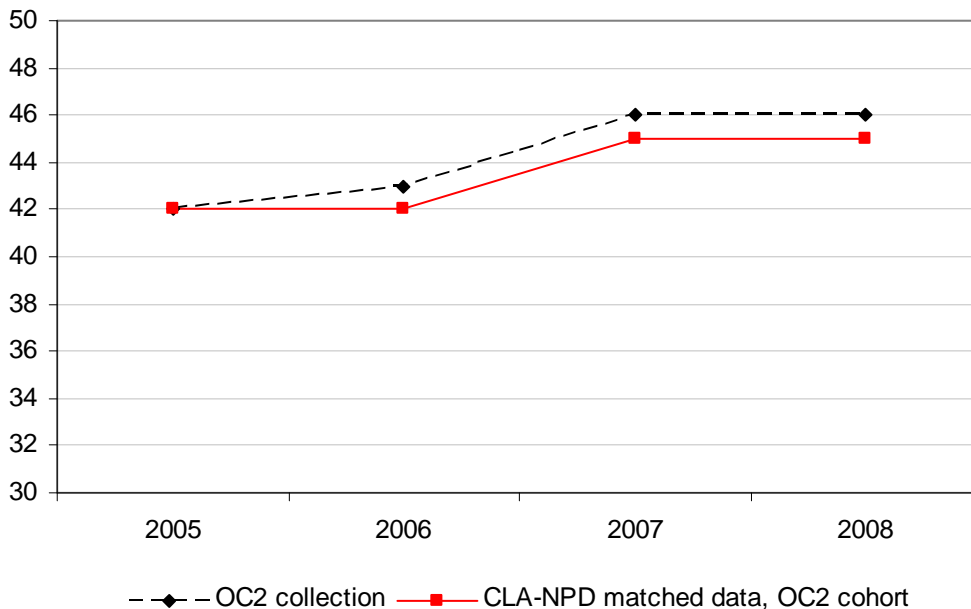
4. Key Points

Comparisons at national level

Overall, figures based on the matched CLA-NPD data are slightly lower than those from the aggregate OC2 collection; however different patterns are seen for each Key Stage, as described below.

- Key Stage 1 – Over the last 4 years, the figures based on the matched CLA-NPD data closely follow those from the OC2 collection, with a difference of around 2-3 percentage points seen in the percentage achieving the expected level in each of the three subjects.
- Key Stage 2 – The differences between the matched CLA-NPD data and the OC2 data are a lot smaller at Key Stage 2 where for science there is no difference in the percentage achieving the expected result in the most recent year, 2008, and for English and mathematics there is a difference of just 1 percentage point. This is illustrated in the chart below which shows the percentage achieving the expected level at Key Stage 2 in English from each data source.

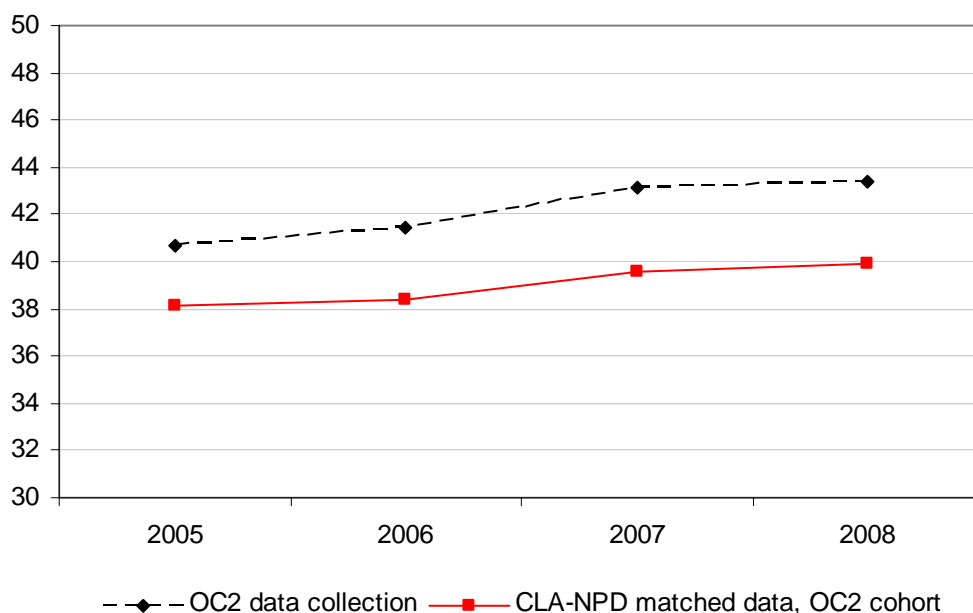
Chart 1 – Percentage of looked after children achieving expected level in Key Stage 2 English – comparison of OC2 collection and CLA-NPD matched data



- Key Stage 3 – There is also a very small difference between the two sources at Key Stage 3 with figures from the CLA-NPD matched data closely replicating those from the OC2 collection. Looking at figures from the most recent year, 2008, there is no difference in the percentage achieving the expected level in English and a difference of 1 percentage point in the percentage achieving the expected level in mathematics and science.

- Key Stage 4 – The differences between the OC2 data and the CLA-NPD data are slightly larger at Key Stage 4 and this is likely to be due to the lower volumes of UPNs which we have received for this group (see figure 1 of the Technical Notes). The chart below shows the figures from both sources for the percentage achieving 5+A*-G at GCSE/ GNVQ, where the difference is around 3 percentage points. However the differences seen in the figures for the other indicators at this key stage vary and for the percentage achieving 1+A*-G at GCSE/ GNVQ there has actually been a narrowing of this difference in recent years which is perhaps a reflection of the improvements we have seen in the volumes of UPNs we have received from Local Authorities.

Chart 2 – Percentage of looked after children achieving 5+A*-G at GCSE/ GNVQ – comparison of OC2 collection and CLA-NPD matched data

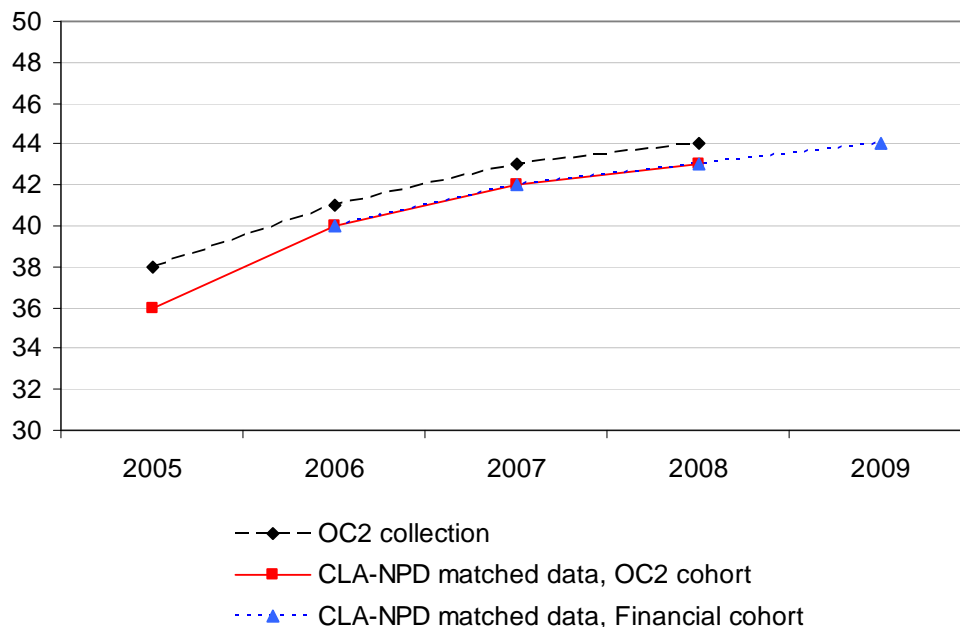


Impact of changing to the financial cohort basis

The OC2 collection covers all children looked after continuously for 12 months at 30 September each year and looks at their attainment in the previous summer. Due to the timings of the CLA data collection we are planning to change the cohort of measurement from this academic year basis to a financial year basis and consider the cohort of children looked after continuously for 12 months at 31 March each year and look at their attainment the following summer, this will have the benefit of enabling us to publish data at a much earlier point. Further details of this change can be found in section 7 of the Technical Notes.

Figures from the CLA-NPD matched data for each of these cohorts are very similar to the OC2 across all Key Stages with differences seen of no more than around 1 percentage point across all years and indicators, as shown in the Key Stage 2 chart below.

Chart 3 – Percentage of looked after children achieving expected level in Key Stage 2 mathematics – comparison of CLA-NPD matched data figures for OC2 cohort and financial year cohort



Extensions using new data source

This new data source gives us individual level information on the attainment of looked after children for the first time which provides us with a rich source for analysis. In addition, this data will also be more consistent with that used for all children as it is collected directly from awarding bodies. For these reasons, we are able to publish, alongside this release figures showing the attainment broken down by characteristics and also include figures on additional attainment indicators which were not previously collected via the aggregate collection. Some of these new indicators and other extensions are considered below.

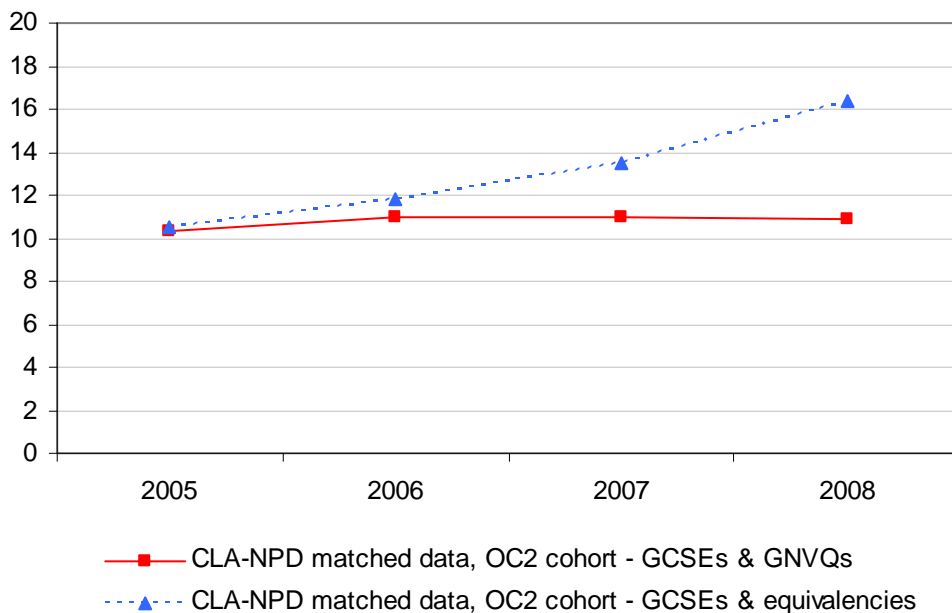
- Key Stage 2, achievements in combinations of subjects – Within the OC2 collection we just collected information on the number of children achieving the expected level in each individual subject. With access to the matched data, we can now consider which children achieved the expected level in more than one subject – for example, the percentage of looked after children (in the OC2 cohort) achieving the expected level in both English and mathematics in 2008 was 35, which compares with 45 per cent of children who achieved the expected level in English and 43 per cent of children who achieved the expected level in mathematics in that year.
- Key Stage 4, achievement at 5+A*-C including English and mathematics – In a similar way, we are also able to look at a range of additional indicators at Key Stage 4, including attainment in this key indicator. In 2008, the percentage of looked after children (in the OC2 cohort) achieving 5+A*-C including English and mathematics was 8.4, which compares to 16.4 percent achieving 5+A*-C.

Impact of including equivalences at Key Stage 4

One of the advantages of moving to the CLA-NPD matched data source relates to the achievement at Key Stage 4 where for some years there has been a discrepancy between the qualifications included within the OC2 collection and those included in the figures for all children. The OC2 collection has included only results in GCSEs and GNVQs, however, since 2003/04 figures for all children have included all qualifications approved for use pre-16. This discrepancy has meant that comparisons between figures for looked after children and all children were not on a consistent basis; the use of the CLA-NPD data will rectify this and ensure that the attainment for looked after children is accurately reflected.

The impact of including these other equivalent qualifications is an increase of around 2 percentage points, however this varies for the different indicators and is slightly higher in more recent years. The chart below illustrates this impact for the percentage achieving 5+A*-C; the dotted line shows the percentage including other equivalent qualifications which increases steadily while the equivalent red line for GCSEs/ GNVQs only remains flat. The reason for this increase in more recent years is the increase in the take up of these equivalent qualifications, particularly since GNVQs were phased out from 2007.

Chart 4 – Percentage of looked after children achieving 5+A*-C – comparison of CLA-NPD matched data figures including/ excluding equivalent qualifications



5. PSA targets & National Indicators

There are two Public Service Agreement targets and three National Indicators that monitor the attainment of looked after children, as detailed below. For 2009, progress against these targets and indicators will continue to be measured using the aggregate data collection for which data will be published in April 2010. However, for 2010 attainment onwards, these will be measured using the new matched data source. This change will need to be agreed with HM Treasury and Cabinet Office colleagues and we have started the process to set out the detail of the change and its impact and expect this to be agreed by the end of the financial year.

The current Public Service Agreement 11 aims to narrow the gap in educational achievement between children from disadvantaged backgrounds and their peers. This is underpinned by two indicators:

- Indicator 4 aims to increase the proportion of looked after children achieving level 4 in English at Key Stage 2 to 60% by 2011 and to increase the proportion achieving level 4 in mathematics at Key Stage 2 to 55% by 2011.
- Indicator 5 aims to increase the proportion of looked after children achieving 5 A*-C GCSEs to 20% by 2011.

Further detail about these PSA targets can be found on the HM Treasury website here: http://www.hm-treasury.gov.uk/pbr_csr07_psaopportunity.htm

In addition to the Public Service Agreement target, there are three National Indicators (NIs) relating to the attainment of looked after children:

- NI 99 Children in care reaching level 4 in English at Key Stage 2
- NI 100 Children in care reaching level 4 in Maths at Key Stage 2
- NI 101 Children in care achieving 5 A*-C GCSEs (or equivalent) at Key Stage 4 (including English and mathematics)

National Indicators are a set of performance indicators for Local Authorities. Further information on the National Indicator Set is available on the Communications and Local Government website via the following link: <http://www.communities.gov.uk/publications/localgovernment/nationalindicator>

6. List of tables

Batch 1 – Main national level tables (including time series information)

These tables will be included in the PDF of the publication and will also be available as Excel files on the website.

Table 1	Key Stage 1 eligibility and performance of children who have been looked after continuously for at least twelve months
Table 2	Key Stage 2 eligibility and performance of children who have been looked after continuously for at least twelve months
Table 3	Key Stage 3 eligibility and performance of children who have been looked after continuously for at least twelve months
Table 4a	Key Stage 4 eligibility and performance of children who have been looked after continuously for at least twelve months (GCSE or GNVQs only)
Table 4b	Key Stage 4 eligibility and performance of children who have been looked after continuously for at least twelve months (GCSE and equivalents)

Batch 2 – LA level tables (including time series information)

These tables will be available as downloadable Excel files only and will be published alongside the main publication by the end of November.

Table 5a	Key Stage 1 eligibility and performance of children who have been looked after continuously for at least twelve months - OC2 figures
Table 5b	Key Stage 1 eligibility and performance of children who have been looked after continuously for at least twelve months - OC2 cohort
Table 5c	Key Stage 1 eligibility and performance of children who have been looked after continuously for at least twelve months - Financial cohort
Table 6a	Key Stage 2 eligibility and performance of children who have been looked after continuously for at least twelve months - OC2 figures
Table 6b	Key Stage 2 eligibility and performance of children who have been looked after continuously for at least twelve months - OC2 cohort
Table 6c	Key Stage 2 eligibility and performance of children who have been looked after continuously for at least twelve months - Financial cohort
Table 7a	Key Stage 3 eligibility and performance of children who have been looked after continuously for at least twelve months - OC2 figures
Table 7b	Key Stage 3 eligibility and performance of children who have been looked after continuously for at least twelve months - OC2 cohort
Table 7c	Key Stage 3 eligibility and performance of children who have been looked after continuously for at least twelve months - Financial cohort
Table 8a	Key Stage 4 eligibility and performance of children who have been looked after continuously for at least twelve months (GCSE or GNVQs only) - OC2 figures

Table 8b	Key Stage 4 eligibility and performance of children who have been looked after continuously for at least twelve months (GCSE or GNVQs only) - OC2 cohort
Table 8c	Key Stage 4 eligibility and performance of children who have been looked after continuously for at least twelve months (GCSE or GNVQs only) - Financial cohort
Table 8d	Key Stage 4 eligibility and performance of children who have been looked after continuously for at least twelve months (GCSE and equivalents) - OC2 cohort
Table 8e	Key Stage 4 eligibility and performance of children who have been looked after continuously for at least twelve months (GCSE and equivalents) - Financial cohort

Batch 3 – National level tables, financial cohort (including time series information), breakdown by gender and level distribution

These tables will be available as downloadable Excel files only and will be published alongside the main publication by the end of December.

Table 9	Key Stage 1 eligibility and performance of children who have been looked after continuously for at least twelve months, by gender and level distribution
Table 10	Key Stage 2 eligibility and performance of children who have been looked after continuously for at least twelve months, by gender and level distribution
Table 11	Key Stage 3 eligibility and performance of children who have been looked after continuously for at least twelve months, by gender and level distribution
Table 12	Key Stage 4 eligibility and performance of children who have been looked after continuously for at least twelve months (GCSE and equivalents), by gender

Batch 4 – National level tables, financial cohort (data for 2009 attainment only), breakdown by other characteristics

These tables will be available as downloadable Excel files only and will be published alongside the main publication by the end of December.

Table 13	Key Stage 2 eligibility and performance of children who have been looked after continuously for at least twelve months, by characteristics
Table 14	Key Stage 4 eligibility and performance of children who have been looked after continuously for at least twelve months (GCSE and equivalents), by characteristics

7. Future plans for publication

The aim of this publication is to compare the current aggregate source for the attainment of looked after children with the new source from the matched CLA-NPD data. We are intending to continue to use this new source in future years; however we are yet to confirm how this information will be routinely published. We are considering adding information on looked after children to the 'Attainment in Schools by Pupil Characteristics' publication which currently shows attainment by ethnicity, Special Educational Needs, Free School Meals eligibility and English as an additional language (Latest release for Key Stage 2 is available here: <http://www.dcsf.gov.uk/rsgateway/DB/SFR/s000889/index.shtml>). However we are also considering whether to release a separate publication which provides more detail about the attainment of looked after children such as their care history. If you have any comments which you would like us to consider in making the decision about the future format for publishing this information, please contact Jessica Miller (Jessica.Miller@dcsf.gsi.gov.uk).

8. Related publications

Statistical First Release (SFR) on Outcome Indicators for Children Looked After, Twelve months to 30 September 2008 – England

<http://www.dcsf.gov.uk/rsgateway/DB/SFR/s000842/index.shtml>

This publication is our latest release of information from our aggregate data collection from LAs on the outcomes for looked after children. This release contains figures for 2008; figures for 2009 will be released in April 2010.

Children Looked After in England (including adoption and care leavers) year ending 31 March 2009

<http://www.dcsf.gov.uk/rsgateway/DB/SFR/s000878/index.shtml>

This publication contains the latest figures on looked after children including the numbers looked after at 31 March and the numbers starting/ ceasing to be looked after during the year. This publication also contains breakdowns of these figures by a range of characteristics.

9. Contacts

Enquiries about the figures or the methodology used within this publication should be addressed to:

Jessica Miller
Data Services Group
N6, Moorfoot,
Sheffield
S1 4PQ
Email: Jessica.Miller@dcsf.gsi.gov.uk

Press enquiries should be made to the Department's Press Office at:

News Desk
Department for Children, Schools and Families,
Sanctuary Buildings
Great Smith Street
London
SW1P 3BT
Telephone: 0207 925 6789

Table 1: Key Stage 1 eligibility and performance of children who have been looked after continuously for at least twelve months¹

Years: 2005 - 2009

Coverage: England

	Numbers ⁶					Percentages				
	2005	2006	2007	2008	2009	2005	2006	2007	2008	2009
OC2 collection figures²										
Number eligible to sit Key Stage 1 tasks and tests ³	1,700	1,700	1,500	1,600
Achieved at least Level 2 ⁴ in the following:										
Reading	980	980	850	900	.	57	57	55	57	.
Writing	890	890	780	790	.	52	52	51	50	.
Mathematics	1,100	1,100	980	990	.	64	65	64	62	.
Figures based on matched CLA-NPD data source										
OC2 cohort²										
Number eligible to sit Key Stage 1 tasks and tests ³	1,700	1,700	1,500	1,600
Achieved at least Level 2 ⁴ in the following:										
Reading	910	950	830	860	.	54	56	54	54	.
Writing	830	850	750	750	.	49	50	49	47	.
Mathematics	1,100	1,100	960	940	.	62	64	62	59	.
Financial Year cohort⁵										
Number eligible to sit Key Stage 1 tasks and tests ³	.	1,700	1,500	1,500	1,400
Achieved at least Level 2 ⁴ in the following:										
Reading	.	970	790	830	740	.	57	54	55	54
Writing	.	860	700	730	650	.	50	48	48	48
Mathematics	.	1,100	890	920	830	.	64	61	60	61

1. Children looked after continuously for at least twelve months excluding children in respite care.

2. Children looked after continuously for at least twelve months at 30 September.

3. Number of eligible children based on those aged 6 at the start of the academic year i.e. 31 August.

4. Expected level for age group. Figures at Key Stage 1 are based on teacher assessments.

5. Children looked after continuously for at least twelve months at 31 March.

6. All numbers less than 1,000 are rounded to the nearest 10, otherwise they are rounded to the nearest 100.

. Not applicable

Table 2: Key Stage 2 eligibility and performance of children who have been looked after continuously for at least twelve months¹

Years: 2005 - 2009

Coverage: England

	Numbers ⁶					Percentages				
	2005	2006	2007	2008	2009	2005	2006	2007	2008	2009
OC2 collection figures²										
Number eligible to sit Key Stage 2 tests ³	2,900	2,800	2,700	2,700
Achieved at least Level 4 ⁴ in the following:										
English	1,200	1,200	1,200	1,200	.	42	43	46	46	.
Mathematics	1,100	1,200	1,200	1,200	.	38	41	43	44	.
Science	1,600	1,600	1,600	1,600	.	53	57	59	60	.
English & Mathematics
Figures based on matched CLA-NPD data source										
OC2 cohort²										
Number eligible to sit Key Stage 2 tests ³	2,900	2,900	2,700	2,700
Achieved at least Level 4 ⁴ in the following:										
English	1,200	1,200	1,200	1,200	.	42	42	45	45	.
Mathematics	1,100	1,100	1,100	1,200	.	36	40	42	43	.
Science	1,600	1,600	1,600	1,600	.	53	56	59	60	.
English & Mathematics	870	900	910	930	.	30	31	34	35	.
Financial Year cohort⁵										
Number eligible to sit Key Stage 2 tests ³	.	2,700	2,600	2,600	2,400
Achieved at least Level 4 ⁴ in the following:										
English	.	1,100	1,100	1,100	1,100	.	42	45	45	45
Mathematics	.	1,100	1,100	1,100	1,000	.	40	42	43	44
Science	.	1,500	1,500	1,500	1,500	.	57	58	60	62
English & Mathematics	.	870	850	890	820	.	32	33	35	35

1. Children looked after continuously for at least twelve months excluding children in respite care.

2. Children looked after continuously for at least twelve months at 30 September.

3. Number of eligible children based on those aged 10 at the start of the academic year i.e. 31 August.

4. Expected level for age group. Figures at Key Stage 2 are based on test results.

5. Children looked after continuously for at least twelve months at 31 March.

6. All numbers less than 1,000 are rounded to the nearest 10, otherwise they are rounded to the nearest 100.

. Not applicable

Table 3: Key Stage 3 eligibility and performance of children who have been looked after continuously for at least twelve months¹

Years: 2005 - 2008²

Coverage: England

	Numbers ⁷				Percentages			
	2005	2006	2007	2008	2005	2006	2007	2008
OC2 collection figures³								
Number eligible to sit Key Stage 3 tests ⁴	4,000	4,000	4,100	3,900
Achieved at least Level 5 ⁵ in the following:								
English	1,100	1,100	1,200	1,200	27	28	29	30
Mathematics	1,100	1,300	1,200	1,300	28	33	31	33
Science	1,000	1,200	1,200	1,100	26	29	29	29

Figures based on matched CLA-NPD data source

OC2 cohort³

Number eligible to sit Key Stage 3 tests ⁴	4,000	4,000	4,000	3,900
Achieved at least Level 5 ⁵ in the following:								
English	1,000	1,100	1,200	1,200	25	27	29	30
Mathematics	1,100	1,300	1,200	1,200	27	32	30	32
Science	970	1,100	1,200	1,100	24	28	29	28

Financial Year cohort⁶

Number eligible to sit Key Stage 3 tests ⁴	.	3,800	3,800	3,700
Achieved at least Level 5 ⁵ in the following:								
English	.	1,100	1,100	1,100	.	28	30	31
Mathematics	.	1,200	1,200	1,200	.	32	31	32
Science	.	1,100	1,100	1,100	.	29	29	29

1. Children looked after continuously for at least twelve months excluding children in respite care.

2. Figures are available for 2005-2008 only as Key Stage 3 tests were discontinued from 2009.

3. Children looked after continuously for at least twelve months at 30 September.

4. Number of eligible children based on those aged 13 at the start of the academic year i.e. 31 August.

5. Expected level for age group. Figures at Key Stage 3 are based on test results.

6. Children looked after continuously for at least twelve months at 31 March.

7. All numbers less than 1,000 are rounded to the nearest 10, otherwise they are rounded to the nearest 100.

. Not applicable

Table 4a: Key Stage 4 eligibility and performance of children who have been looked after continuously for at least twelve months¹ (GCSE or GNVQs only)

Years: 2005 - 2008

Coverage: England

	Numbers ⁵					Percentages				
	2005	2006	2007	2008	2009	2005	2006	2007	2008	2009
OC2 collection figures²										
Number of children ³	4,700	5,100	5,100	5,100
Entered for at least one GCSE or GNVQ	3,000	3,300	3,400	3,500	.	64.0	65.6	67.7	68.8	.
Achieved (GCSEs or GNVQs only):										
1+ GCSE at grades A*-G	2,900	3,200	3,200	3,400	.	60.2	63.2	63.7	65.6	.
5+ GCSEs at grades A*-G	1,900	2,100	2,200	2,200	.	40.7	41.4	43.1	43.4	.
5+ GCSEs at grades A*-C	510	600	640	710	.	10.8	11.8	12.6	13.9	.

Figures based on matched CLA-NPD data source

OC2 cohort²

Number of children ³	4,700	5,000	5,000	5,100
Entered for at least one GCSE or GNVQ	2,700	3,100	3,100	3,300	.	57.1	60.7	61.8	65.3	.
Achieved (GCSEs or GNVQs only):										
1+ GCSE at grades A*-G	2,500	2,900	3,000	3,200	.	54.3	58.4	59.3	63.0	.
5+ GCSEs at grades A*-G	1,800	1,900	2,000	2,000	.	38.1	38.4	39.6	39.9	.
5+ GCSEs at grades A*-C	490	560	550	560	.	10.3	11.0	11.0	10.9	.

Financial Year cohort⁴

Number of children ³	.	4,900	4,900	5,000	5,000
Entered for at least one GCSE or GNVQ	.	3,100	3,000	3,300	3,500	.	61.8	61.3	66.5	70.1
Achieved (GCSEs or GNVQs only):										
1+ GCSE at grades A*-G	.	2,900	2,900	3,200	3,400	.	59.7	58.8	64.2	68.3
5+ GCSEs at grades A*-G	.	1,900	1,900	2,000	2,100	.	39.3	39.2	40.8	41.8
5+ GCSEs at grades A*-C	.	550	540	560	570	.	11.1	10.9	11.2	11.5

1. Children looked after continuously for at least twelve months excluding children in respite care.

2. Children looked after continuously for at least twelve months at 30 September.

3. Number of children based on those aged 15 at the start of the academic year i.e. 31 August.

4. Children looked after continuously for at least twelve months at 31 March.

5. All numbers less than 1,000 are rounded to the nearest 10, otherwise they are rounded to the nearest 100.

. Not applicable

**Table 4b: Key Stage 4 eligibility and performance of children who have been looked after continuously for at least twelve months¹ (GCSE and equivalents)
Years: 2005 - 2009
Coverage: England**

	Numbers ⁶					Percentages				
	2005	2006	2007	2008	2009	2005	2006	2007	2008	2009
Figures based on matched CLA-NPD data source										
OC2 cohort²										
Number of children ³	4,700	5,000	5,000	5,100
Entered for at least one GCSE or equivalent	2,900	3,400	3,500	3,900	.	62.8	68.0	70.2	75.1	.
Achieved (GCSE or equivalent) ⁴ :										
Any pass	2,800	3,300	3,400	3,800	.	60.5	66.1	68.2	73.6	.
1+ GCSE at grades A*-G	2,600	3,100	3,100	3,500	.	55.5	60.6	62.4	67.9	.
5+ GCSEs at grades A*-G	1,800	2,000	2,100	2,400	.	38.8	40.2	42.1	45.9	.
5+ GCSEs at grades A*-C	490	600	680	840	.	10.5	11.8	13.5	16.4	.
5+ GCSEs at grades A*-C including English & mathematics GCSEs	290	310	350	430	.	6.1	6.1	7.0	8.4	.
Financial Year cohort⁵										
Number of children	.	4,900	4,900	5,000	5,000
Entered for at least one GCSE or equivalent	.	3,400	3,400	3,800	4,000	.	69.5	69.6	76.1	80.4
Achieved (GCSE or equivalent) ⁴ :										
Any pass	.	3,300	3,300	3,700	3,900	.	67.7	67.8	74.7	79.5
1+ GCSE at grades A*-G	.	3,100	3,100	3,400	3,700	.	62.1	61.9	69.1	73.5
5+ GCSEs at grades A*-G	.	2,000	2,100	2,300	2,500	.	41.2	41.6	47.0	51.1
5+ GCSEs at grades A*-C	.	580	670	830	1,000	.	11.8	13.5	16.6	21.0
5+ GCSEs at grades A*-C including English & mathematics GCSEs	.	300	340	430	490	.	6.1	6.8	8.6	9.9

1. Children looked after continuously for at least twelve months excluding children in respite care.

2. Children looked after continuously for at least twelve months at 30 September.

3. Number of children based on those aged 15 at the start of the academic year i.e. 31 August.

4. Includes all equivalent qualifications.

5. Children looked after continuously for at least twelve months at 31 March.

6. All numbers less than 1,000 are rounded to the nearest 10, otherwise they are rounded to the nearest 100.

. Not applicable